



# ***SKIING***

***2018 AND 2019 RULES***

---



# IF *i* LOSE

I'LL RESPOND WITH RESPECT.

Don't undo my hard work  
with poor sportsmanship.



**RESPECT.**  
It's the name of the game.

IF YOU THINK YOU OR YOUR TEAMMATE HAS HAD A  
**CONCUSSION**

**DON'T HIDE IT. • REPORT IT. • TAKE TIME TO RECOVER.**



**IT'S BETTER TO MISS ONE GAME THAN THE WHOLE SEASON.**

**WHEN IN DOUBT, GET CHECKED OUT.**

For more information and resources, visit [www.CDC.gov/headsup](http://www.CDC.gov/headsup).

NCAA is a trademark of the National Collegiate Athletic Association.  
The mark "CDC" is licensed under authority of the PHS.

Reference to any commercial entity or product or service on this page should not be construed as  
an endorsement by the Government of the company or its products or services.



---

# **2018 and 2019 NCAA MEN'S AND WOMEN'S SKIING RULES**

**NATIONAL COLLEGIATE ATHLETIC ASSOCIATION**



[ISSN 0736-5160]  
THE NATIONAL COLLEGIATE ATHLETIC ASSOCIATION  
P.O. BOX 6222  
INDIANAPOLIS, INDIANA 46206-6222  
317-917-6222  
[NCAA.ORG](http://NCAA.ORG)  
AUGUST 2017

**Manuscript Prepared By:** Fredrik Landstedt, *Secretary-Rules Editor, NCAA Men's and Women's Skiing Committee.*

**Edited By:** Ben Brownlee, *Assistant Director of Playing Rules and Officiating.*

**Production By:** Marcia Stubbeman, *Associate Director of Publishing.*

NCAA, NCAA logo and NATIONAL COLLEGIATE ATHLETIC ASSOCIATION are registered marks of the Association, and use in any manner is prohibited unless prior approval is obtained from the Association.

COPYRIGHT, 1974, BY THE NATIONAL COLLEGIATE ATHLETIC ASSOCIATION  
REPRINTED: 1975, 1976, 1977, 1978, 1979, 1980, 1981, 1982, 1983, 1984, 1985, 1986, 1987,  
1988, 1989, 1990, 1991, 1992, 1993, 1994, 1995, 1996, 1997, 1998, 1999, 2000, 2001, 2002, 2003,  
2004, 2005, 2006, 2007, 2008, 2009, 2011, 2013, 2015, 2017  
PRINTED IN THE UNITED STATES OF AMERICA

---

# Contents

---

	<i>page(s)</i>
NCAA Men's and Women's Skiing Committee .....	<a href="#"><u>4</u></a>
Conduct and Administrative Rules.....	<a href="#"><u>5</u></a>
Rules Changes for 2018 and 2019 .....	<a href="#"><u>6</u></a>
Official NCAA Skiing Rules .....	<a href="#"><u>7</u></a>
RULE 1—General Meet Officials.....	<a href="#"><u>7</u></a>
RULE 2—Results and Scoring.....	<a href="#"><u>10</u></a>
RULE 3—Preparation for Alpine Events .....	<a href="#"><u>13</u></a>
RULE 4—Event Officials – Alpine .....	<a href="#"><u>14</u></a>
RULE 5—Competitors, Seeding, and Start and Finish – Alpine .....	<a href="#"><u>18</u></a>
RULE 6—Competition – Alpine.....	<a href="#"><u>21</u></a>
RULE 7—Protests and Appeals – Alpine .....	<a href="#"><u>23</u></a>
RULE 8—Technical Regulations and Arrangements for Cross Country Events.....	<a href="#"><u>25</u></a>
RULE 9—Event Officials – Cross Country .....	<a href="#"><u>31</u></a>
RULE 10—Competitors, Seeding, and Start and Finish – Cross Country .....	<a href="#"><u>40</u></a>
RULE 11—Timing—Cross Country.....	<a href="#"><u>46</u></a>
RULE 12—Competition – Cross Country .....	<a href="#"><u>48</u></a>
RULE 13—Protests and Appeals – Cross Country .....	<a href="#"><u>51</u></a>
Appendix A—Scoring Tables.....	<a href="#"><u>53</u></a>
Appendix B—Sprint Brackets .....	<a href="#"><u>54</u></a>
Appendix C—Concussions .....	<a href="#"><u>57</u></a>
Appendix D—Accommodations for Student-Athletes with Disabilities.....	<a href="#"><u>59</u></a>
Appendix E—Guidelines for Lightning.....	<a href="#"><u>61</u></a>
Index to Rules.....	<a href="#"><u>62</u></a>

---

# NCAA Men's and Women's Skiing Committee

---

**Secretary-Rules Editor**  
**Fredrik Landstedt**  
University of New Mexico  
505-277-5423  
[landsted@unm.edu](mailto:landsted@unm.edu)  
*Term expires: 9-1-19*

The chart below lists the members of the committee that voted on and approved the rules included in this edition of the book. This information is being included for historical purposes.

Name	Institution	Term Expiration
James DiLoreto	Boston College	9-1-2019
Kevin Francis	Montana State University-Bozeman	9-1-2020
Shanna Kornachuk	Harvard University	9-1-2019
Richard Rokos	University of Colorado, Boulder	9-1-2017
Ethan Townsend	St. Lawrence University	9-1-2017

For a complete and current listing of the NCAA Men's and Women's Skiing Committee roster is available online at [www.ncaa.org/playingrules](http://www.ncaa.org/playingrules).

---

# Conduct and Administrative Rules

---

The NCAA Men's and Women's Skiing Rules have been designated as either conduct rules or administrative rules. Administrative rules are those dealing with preparation for the contest. The conduct rules are those that deal directly with the contest itself. The administrative rules in this book may be altered only as indicated within the rules. No conduct rule may be changed by mutual consent of the competing institutions. All NCAA member institutions are required to conduct their intercollegiate contests according to these rules.

The administrative rules are Rules 3, 4, 8 and 9. These may be altered by mutual consent of the competing institutions only as indicated in the rules. All of the other rules are conduct rules and may not be altered.

Member institutions shall conduct their intercollegiate cross country ski competition according to the rules listed in this book. If U.S. National Championships, Super Tour events or other national FIS competitions are used as NCAA qualifying events, the International Ski Federation (FIS) or United States Ski Association (USSA) rules for the event regarding Rule 9 (Event Officials) and Rules 10.2, 10.3, 10.10, 12.4.2.2 and 13.1 will be followed. All other rules will apply as written.



---

# Rules Changes for 2018 and 2019

---

*Listed below are rules references that were significantly altered from the last edition. Each changed segment is identified in the book by a shaded background on the page number listed to the right.*

2.8	Scoring
5.2.2.3	Seeding change option
8.10.6	Start line governed by FIS or USSA
8.10.7	Finish zone governed by FIS or USSA
8.10.8	Finish line governed by FIS or USSA
8.12	Mass start and relay finish zone governed by FIS or USSA
8.13	Relay exchange zone governed by FIS or USSA
9.25.5	Pre-approved jury
10.3.1	Replacing designated scorer
10.10.1.2	Seeding change option
10.10.2.4	Seeding change options
11.5	Recording time governed by FIS or USSA
12.6	Relay exchange governed by FIS or USSA
12.7	Total relay time governed by FIS or USSA
Appendix A	Deleted scoring table, 50 point option

Multiple references throughout the book name the governing bodies as the International Ski Federation (FIS) rules and/or United States Ski Association (USSA) standards.

---

# RULE 1

## General Meet Officials

---

### 1.1 Games Committee

The games committee shall monitor and actively supervise the conduct of each meet within the NCAA rules. In NCAA championships, the NCAA Men's and Women's Skiing Committee shall serve as the games committee.

*Note: Every effort should be made to accommodate disabled skiers. Coaches should be informed at the orientation meeting of the presence of disabled skiers in the competition.*

### 1.2 Organizing Committee

The organizing committee shall be responsible for all aspects of conducting the competition, which may include the selection of the site(s) and course(s). The organizing committee shall appoint all officials and committees except the coaches' representative and the alternate coaches' representative, who shall be selected by the coaches at the orientation meeting.

### 1.3 Personnel

The organizing committee may include the following: the meet director, who will preside as the chair; the race secretary; the chief of race—Alpine; the chief of race—cross country; and the chief of support services.

### 1.4 Meet Director

The duties of the meet director are:

- 1.4.1 To direct the efforts of the race secretary, chief of race—Alpine, chief of race—cross country and chief of support services;
- 1.4.2 To conduct a random draw for the election of the coaches' representative at the orientation meeting(s);
- 1.4.3 To conduct a random draw for seedings; and
- 1.4.4 To schedule the orientation meeting, which normally is held the evening before the event(s). The meeting should include the chiefs of race—Alpine/cross country, the technical delegates—Alpine/cross country, the referees—Alpine/cross country, major meet officials and the representatives of all competing teams. The coaches' and alternate coaches' representatives shall be selected for each event by random selection from a pool of qualified coaches.

### 1.5 Race Secretary

The duties of the race secretary are:

- 1.5.1 To be responsible directly to the meet director;
- 1.5.2 To perform the functions of a secretary and general office worker;

- 1.5.3 To mail invitations, entry forms, assumption-of-risk forms, informational letters and schedules of events;
- 1.5.4 To provide timely and accurately prepared start orders, time keeping, scoring, gatekeeper and controller forms to the appropriate officials;
- 1.5.5 To distribute complete bib packets to an appropriate team representative at the orientation meeting; and
- 1.5.6 To be responsible, through the direction of the referee, for posting the official results as soon as possible after the event and publishing and distributing the final results of the meet.

### **1.6 Chiefs of Race**

The duties of the chiefs of race are:

- 1.6.1 To direct and coordinate the work of all race officials;
- 1.6.2 To designate the forerunners and postrunners;
- 1.6.3 To summon the meeting(s) of the race committee; and
- 1.6.4 To conduct all meetings for the consideration of technical questions and chair joint meetings of the race committee and coaches.

### **1.7 Tobacco Use by Meet Personnel**

Tobacco use by technical delegates, referees and any other meet personnel shall be reported to the event administrator.

## **Support Services Committee**

### **1.8 Duties**

The support services committee is responsible for providing logistical support necessary to conduct a meet.

### **1.9 Personnel**

The support services committee shall consist of the chief of support services, who will preside as the chair; chief of sports information; chief of medical services; chief of transportation; chief of equipment; and chief of protocol.

### **1.10 Chief of Support Services**

The duties of the chief of support services are:

- 1.10.1 To direct, coordinate and provide for all support activities, such as providing necessary equipment, transportation, medical services, appropriate media coverage, meeting and waxing facilities, banquet arrangements and all other logistical services essential for the conduct of quality meets;
- 1.10.2 To summon and chair the meeting(s) of the support services committee; and
- 1.10.3 To direct and coordinate the efforts of the support officials.

### **1.11 Chief of Sports Information**

The duties of the chief of sports information are:

- 1.11.1 To provide efficient and timely media coverage and working arrangements and to host media personnel; and

- 1.11.2 To provide the development of a meet program and the distribution of final event and meet results.

### **1.12 Chief of Medical Services**

The duties of the chief of medical services (physician) are:

- 1.12.1 To provide a healthy environment and on-site temporary medical services; and
- 1.12.2 To coordinate the efforts of the athletic trainer(s), ski patrol and the physician.

### **1.13 Chief of Equipment**

The duties of the chief of equipment are:

- 1.13.1 To assure the supply, collection and distribution of materials and equipment to the chief of course in order to properly conduct the events; and
- 1.13.2 To be responsible for augers, crowbars, shovels, rakes, track setters, bibs, flags, panels, training poles, competition poles, dye markers, course markers, gatekeepers' and checkers' packets, salt (fertilizer), etc.

### **1.14 Chief of Protocol**

The duties of the chief of protocol are:

- 1.14.1 To provide meeting rooms for coaches and the media; and
- 1.14.2 To make appropriate arrangements for the awards ceremonies and arrange banquets and related activities.

---

# RULE 2

## Results and Scoring

---

### Collegiate Meets

#### 2.1 Events

Collegiate meets may be either:

- 2.1.1 Men's and/or women's Alpine and cross country;
- 2.1.2 Men's and/or women's Alpine; or
- 2.1.3 Men's and/or women's cross country.

The events in a collegiate ski meet may include the giant slalom, slalom, individual cross country and cross country relay for both men and women.

#### 2.2 Approved Cross Country Distances

Eight hundred meters to 30 kilometers.

#### 2.3 Number of Events

- 2.3.1 A men's and women's Alpine and cross country meet consists of four to eight events equally distributed by gender and discipline.
- 2.3.2 A men's and women's Alpine-only or cross country-only meet consists of two to four events, equally distributed by gender and discipline.
- 2.3.3 A men's Alpine-only or cross country-only meet consists of one to four events.
- 2.3.4 A women's Alpine-only or cross country-only meet consists of one to four events.

#### 2.4 Alpine Discontinuance

The decision to discontinue a race may be final or provisional. If both runs cannot be completed by extending the meet competition by one day, the discontinuance is final, and the results of the event (slalom or giant slalom) shall be based on the results of the completed run. If the discontinuance occurs after the first run, every effort should be made to complete both runs on the announced dates of the meet or by extending the competition one day (provisional discontinuance); the results will stand and will become the results for the event even if the second run cannot be completed.

The decision to make the discontinuance final is the responsibility of the race jury.

In the event of a discipline not being able to be completed due to discontinuance, the team score of the discipline that was completed shall be doubled and the team champion shall be determined by the total number of points scored (after this adjustment).

## 2.5 Cross Country Discontinuance

The decision to discontinue a race may be final or provisional. If the race cannot be completed by extending the meet competition one day, the discontinuance is final.

If the discontinuance occurs before the race is completed, every effort should be made to reschedule the race on the announced dates of the meet or by extending the competition one day (provisional discontinuance).

The decision to make the discontinuance final is the responsibility of the race jury. In the event of a discipline not being able to be completed because of discontinuance, the team score of the discipline that was completed shall be doubled and the team champion determined by the total number of points scored (after this adjustment).

## 2.6 Publication of Results

The unofficial results list shall be displayed immediately after each event on the official board located at the race site. This results list becomes official pending the resolution of any protest by the competition jury. The official results list should contain:

Nordic Heading—Name of race, name of event, location of event, date of race, jury, start time, weather conditions, snow conditions, temperature, technical data (height differential, maximum climb and total climb in meters), place, bib number, identification number (optional), name, team, intermediate time (optional), total time, team points and technical delegate's signature.

Alpine Heading—Name of race, name of event, location of event, date of race, jury, course setters (both runs), forerunners (both runs), number of gates (both runs), start time (both runs), weather conditions, snow conditions, temperature, technical data (course name, start elevation, finish elevation, vertical drop, homologation number), place, bib number, identification number (optional), name, team, first run time, second run time, total time, race points, team points and technical delegate's signature.

## 2.7 Team Score

In a meet involving both Alpine and Nordic (cross country) disciplines, in which two events are held in one discipline, and one event is held in the other discipline, the team scores of the one event shall be doubled. The final score of a team in the meet shall be the sum of the points earned in each of the events. If the total points are the same for more than one team, that position shall be declared a tie.

## 2.8 Scoring

Only three individuals from any one team may score team points in an individual event. If a fourth or fifth individual from one team finishes in a scoring position, the points to be awarded to the place are awarded to the next skier who was not a fourth or fifth skier from a team.

In case of a tie, the tying skiers are awarded the average of the points designated for the tied position plus the points for the next place of finish.

The following method shall be used for scoring individual events:

**2.8.1 Score 30 - Weighted Scoring.** A weighted scoring system may be used with a 40-point base for the first 30 competitors. Refer to the table in Appendix A to find the scoring points awarded to first- through 30th-place finishers in individual events.

## **2.9 Relay, Mixed-Relay and Sprint Relay Scoring**

Relay, mixed-relay and sprint relay competition scoring shall be determined by the region hosting the competition.

## **2.10 Individual Sprint Competition**

After the conclusion of the final and once the race results are established and official per International Ski Federation (FIS) rules and/or by United States Ski Association (USSA) standards, or for regional competitions the Advance-By-Order-Of-Finish rules, points are assigned as they are in any other individual event with the top three from each team earning team points.

---

# RULE 3

## Preparation for Alpine Events

---

### 3.1 Events

Member institutions shall conduct all of their intercollegiate ski competition in accordance with the playing rules listed in this book. In addition, the conduct of NCAA Alpine events (giant slalom and slalom) shall be governed by International Ski Federation (FIS) rules for FIS-sanctioned events and by United States Ski Association (USSA) standards for USSA-sanctioned events where noted. The sites for these events shall be prepared before the meet.

### 3.2 Giant Slalom

The following giant slalom rules will be governed by International Ski Federation (FIS) rules and/or United States Ski Association (USSA) standards:

3.2.1 *Vertical Drop.*

3.2.2 *Number of Gates.*

3.2.3 *Course Marking.*

3.2.4 *Course Preparation.*

3.2.5 *Start Area.*

3.2.6 *Finish Area.*

3.2.7 *Finish Line.*

### 3.3 Slalom

The following slalom rules will be governed by International Ski Federation (FIS) rules and/or United States Ski Association (USSA) standards:

3.3.1 *Vertical Drop, Gates.*

3.3.2 *Hard Snow.*

3.3.3 *Slalom Gates.*

3.3.4 *Course Preparation.*

3.3.5 *Start, Finish.*

### 3.4 Chemicals

Chemicals may be used in the preparation of courses to improve the conditions.



---

# RULE 4

## Event Officials—Alpine

---

### 4.1 Race Committees

4.1.1 *Function.* The race committees shall be responsible for all technical aspects in the conduct of the competition, including course selection and preparation. They shall approve the appointment and replacement of all subordinate officials. The race committees shall be constituted as follows: the chief of race (chair), technical delegate, referee, chief of start, chief of finish, chief of course, chief of calculation and chief timer. Duties of other officials as listed in this rule may be combined or are optional as conditions dictate.

The technical delegate, chief of race, super gatekeepers, referee, start and finish referees, course setters and forerunners must be current members of the United States Ski Association.

### 4.2 Duties

Duties for the following positions shall be governed by International Ski Federation (FIS) rules and/or United States Ski Association (USSA) standards.

4.2.1 *Technical Delegate.*

4.2.2 *Chief of Race.*

4.2.3 *Referee.*

4.2.4 *Chief of Course.*

4.2.5 *Course Setter.*

4.2.6 *Chief Gatekeepers.*

4.2.7 *Gatekeepers.*

4.2.8 *Start Referee.*

4.2.9 *Starter.*

4.2.10 *Assistant Starter(s).*

4.2.11 *Finish Referee.*

4.2.12 *Chief Timer.*

4.2.13 *Assistant Timers.*

4.2.14 *Recorder.*

4.2.15 *Chief of Calculation.*

4.2.16 *Scoreboard Poster(s).*

4.2.17 *Announcer.*

### 4.3 Super Gatekeepers

- 4.3.1 *Control Limits.* In the slalom, there should be super gatekeepers with responsibility for 15 to 20 gates.
- 4.3.2 *Qualifications.* Super gatekeepers must have a level one certification.
- 4.3.3 *Duties.* Work under the chief gatekeeper. The duties of a gatekeeper will be governed by International Ski Federation (FIS) rules and/or United States Ski Association (USSA) standards.

### 4.4 Coaches' Representatives

- 4.4.1 *Selection.* The coaches' representative and alternate coaches' representative shall be selected at the orientation meeting for each event by random draw of all teams entered in that event. The coaches' and alternate coaches' representatives must be affiliated with different teams and must be knowledgeable in the discipline to which they are assigned.

No person can hold more than one position on the jury for any single event.

4.4.2 *Duties.*

- 4.4.2.1 To serve as a voting member of the jury;
- 4.4.2.2 To attend all race committee meetings in order to provide coaches' input into the conduct of the meet;
- 4.4.2.3 To accompany the referee and other members of the jury in the inspection of the courses immediately after they have been set; and
- 4.4.2.4 The alternate coaches' representative shall attend all jury meetings and shall have a vote only if a decision is required concerning a competitor from the coaches' representative's school. (In such a case, the coaches' representative is disqualified from voting.)

### 4.5 Jury

- 4.5.1 *Personnel.* No person can hold more than one position on the jury for any single event. Competitors may not serve as jury members. Nonvoting members include the chief of start and chief of finish. The same jury may be used for all competitions on the same day. The jury for each event shall be made up of the following voting members:

- 4.5.1.1 The technical delegate, who serves as chair and who has the deciding vote in the case of a tie vote including his or her own vote;
- 4.5.1.2 The chief of race;
- 4.5.1.3 The referee; and
- 4.5.1.4 The coaches' representative. (The alternate coaches' representative shall vote only if a decision is required concerning a competitor from the coaches' representative's school.) (See Rule 4.4.2.4.)

The coaches' representative and alternate representative shall not have the responsibility to disqualify a competitor during the running of the race.

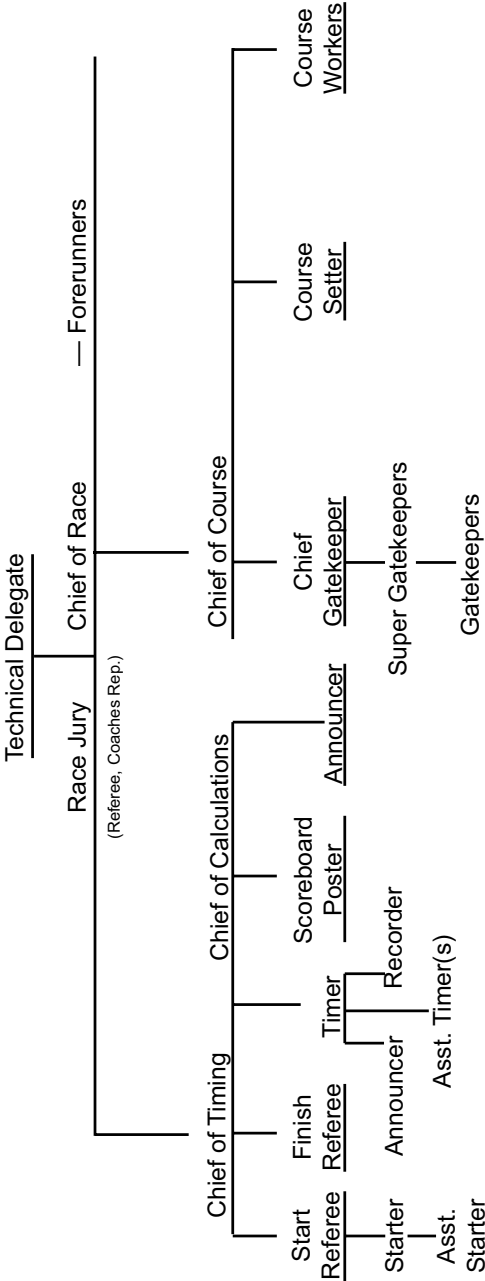
- 4.5.1.5 The jury must be pre-approved by the games committee and a full disclaimer of possible conflicts of interests for all jury members must be made before serving on the jury.

4.5.2 *Duties.*

- 4.5.2.1 To inspect the courses before the event and ensure that they are in the best possible condition. Particular attention should be paid to the following points: Sufficient snow depth and preparation, including use of chemicals on courses and hills; sufficient protection of all danger spots; inspection of medical and rescue facilities; inspection of start/finish areas; and inspection of established course-control and crowd-control barriers;
- 4.5.2.2 Ensure that competition is conducted in accordance with NCAA rules; make recommendations on cancellation, discontinuance or postponement of competition to the technical delegate or jury; and care for all matters not otherwise prescribed;
- 4.5.2.3 To adjudicate any protests and questionable disqualifications resulting from an event when directed by the technical delegate. Films or videotapes may be used by the jury;
- 4.5.2.4 To have the right and obligation, by majority vote, to change the control gates or demand additional control gates to ensure the safety of the racers;
- 4.5.2.5 To disqualify a racer for a lost ski when warranted by safety factors at a respective site; and
- 4.5.2.6 To supervise the conduct of the events.

*Note: Any Alpine jury member has the authority to approve a provisional rerun.*

**Alpine Race Officials**



---

# RULE 5

## Competitors, Seeding, and Start and Finish—Alpine

---

### 5.1 Competitors

5.1.1 *Designated Team Scorers.* For regular-season events, up to six men and six women from a team may compete in each individual event for the team score, with the highest-finishing three in each to count. Only men may compete in men's events, and only women may compete in women's events.

Additional skiers may compete as designated non-team scorers. Designated non-team scorers do not displace team points.

5.1.2 *Invitation or Announcement.* The host institution or governing association shall determine the competition program for the meet. This information shall be made clear in the invitation or announcement of the meet. Information shall be specific regarding start times, disciplines and/or techniques, distances, start formats, and locations of events.

5.1.3 *Entries.* The names of all entrants, including alternates (if applicable), and their starting order, shall be submitted to the sponsoring institution before the start of the meet. The final team starting order for each event shall be submitted at the orientation meeting. Any team or individual failing to comply with the above may be prohibited from entering. A competitor is considered to be entered in the meet when he or she starts any single event. At this point, the individual is counted against the total number of competitors allowed for that institution at that competition.

5.1.4 *Substitution.*

5.1.4.1 For regular-season events, a sick or injured designated scorer may be replaced up to one hour before the start of the competition. No change in seed will occur; and

5.1.4.2 Once a team has reached its team size limits (that is, 12 men and 12 women), there can be no substitution for subsequent events.

5.1.5 *Conduct.* All competitors are expected to conduct themselves in a sporting manner and to present a personal appearance that will reflect the highest credit upon the sport and their institutions. Competitors who bring discredit to their colleges or the sport may be disqualified from the race being contested by a majority vote of the competition jury.

Coaches or other athletics team personnel who are disqualified by a race official must immediately depart the competition arena for the duration of the race being contested.

- 5.1.6 *Tobacco Use by Team Personnel.* Student-athletes, coaches and other team personnel who use tobacco in the competition arena shall be disqualified by any race official from the race during which the violation occurred.
- 5.1.7 *Knowledge of Rules.* It is recommended that the contestants study these rules as they are obligated to observe all NCAA regulations and any special regulations laid down by the race committee.
- 5.1.8 *Uniforms.* During competition and while accepting awards, skiers must wear their official team uniform. Uniforms shall meet the following conditions:
- 5.1.8.1 Uniforms must be team-issued, of the same predominant color and substantially similar. Soft armor must comply with NCAA Bylaw 12.5.4 (Use of Logos on Equipment, Uniforms and Apparel).
- 5.1.8.2 Hard armor (including giant slalom suits, helmets, pole guards, shin guards, gloves and goggles) is considered equipment and therefore does not have to comply with these rules. Each giant slalom suit worn by a team member must be team-issued, of the same predominant color and substantially similar to that worn by any member of the rest of that team.
- 5.1.8.3 An institution's uniform or any item of apparel (for example, team jersey, socks) that is worn by a student-athlete while representing the institution in intercollegiate competition may contain only a single manufacturer's or distributor's logo or trademark on the outside of the apparel (regardless of the visibility of the logo or trademark). The logo or trademark shall be contained within a four-sided geometrical figure (that is, rectangle, square, parallelogram) that does not exceed  $2\frac{1}{4}$  square inches.
- 5.1.8.4 If an institution's uniform or any item of apparel worn by a student-athlete in competition contains washing instructions on the outside of the apparel on a patch that also includes the manufacturer's or distributor's logo or trademark, the entire patch must be contained within a four-sided geometrical figure (that is, rectangle, square, parallelogram) that does not exceed  $2\frac{1}{4}$  square inches.
- 5.1.8.5 The restriction on the size of a manufacturer's or distributor's logo is applicable to all apparel worn by student-athletes during the conduct of the institution's competition, which includes any premeet or postmeet activities (for example, postmeet celebrations on the course, pre- or postmeet press conferences) involving student-athletes.
- 5.1.8.6 Failure to comply with this regulation may jeopardize a contestant's eligibility.
- 5.1.8.7 A student-athlete shall not wear any apparel that identifies another entity other than the student-athlete's institution. Helmets and shinguards shall be free of all marks other than institutional logos and NCAA-compliant manufacturer's logos.
- Exception:* One flag patch (country, state or city) is allowed on the uniform or equipment.
- Exception:* One memorial patch or insignia is allowed on the uniform or equipment.

## 5.2 Order, Draw, Seeding and Race Numbers

5.2.1 *Events.* The Alpine events in a skiing meet shall be the giant slalom and slalom for both men and women.

The host institution or governing association shall determine the order of events for the meet.

5.2.2 *Racing Order.* The starting order of the members of each team shall be decided by one of the three following methods:

5.2.2.1 The starting order of the members of each team shall be decided by that team's coach. Coaches shall submit their team's starting order to the meet director with their entries. Separate random drawings shall be made by rounds for each event. Coaches shall have the option of passing any rounds if the entry is short of maximum. The top 30 finishers in the first run of the giant slalom and slalom will be reversed for establishing the starting order for the second run. All other starters in the second run will start in order of their finish in the first run. Breaking ties will be governed by International Ski Federation (FIS) rules and/or United States Ski Association (USSA) standards.

5.2.2.2 The starting order shall be governed by International Ski Federation (FIS) rules and/or United States Ski Association (USSA) standards.

5.2.2.3 For NCAA championships competitions, the seed with the highest-ranked regional student-athletes shall be drawn randomly. Subsequent student-athletes shall compete in the order of regional ranking, alternating by region.

5.2.3 *Race Numbers.* Race numbers shall be issued for each event.

5.2.4 *Procedure for Start.* The start procedure will be governed by International Ski Federation (FIS) rules and/or United States Ski Association (USSA) standards.

5.2.5 *Delayed Start.* The procedure for delayed start will be governed by International Ski Federation (FIS) rules and/or United States Ski Association (USSA) standards.

5.2.6 *Determination of Finish.* The procedure for determination of finish will be governed by International Ski Federation (FIS) rules and/or United States Ski Association (USSA) standards.

---

# RULE 6

## Competition—Alpine

---

### 6.1 Equipment

6.1.1 *Helmets.* Helmets will be governed by International Ski Federation (FIS) rules and/or United States Ski Association (USSA) standards.

6.1.2 *Boots, Antivibration Plates and Skis.*

6.1.2.1 The maximum distance between the lower part of the ski and the ski boot sole will be governed by International Ski Federation (FIS) rules and/or United States Ski Association (USSA) standards. All contestants may be checked within the finish corral for compliance with the equipment rule.

6.1.2.2 The maximum distance between the bottom of the ski boot sole and the base of the skier's heel will be governed by International Ski Federation (FIS) rules and/or United States Ski Association (USSA) standards.

6.1.2.3 Alpine skis will be governed by International Ski Federation (FIS) rules and/or United States Ski Association (USSA) standards.

6.1.2.4 Failure to comply with equipment standards shall result in a disqualification.

6.1.3 *Lost Equipment.* In slalom competitions, a competitor is allowed to recover any lost equipment during the competition, including re-attaching lost skis, without being disqualified, as long as there is no outside assistance.

### 6.2 Giant Slalom

6.2.1 *Definition.* A giant slalom race shall be governed by International Ski Federation (FIS) rules and/or United States Ski Association (USSA) standards.

6.2.2 *Forerunners.* Forerunners shall be governed by International Ski Federation (FIS) rules and/or United States Ski Association (USSA) standards.

6.2.3 *Second-Run Starting Order.* The second-run starting order will be governed by International Ski Federation (FIS) rules and/or United States Ski Association (USSA) standards.

6.2.4 *Disqualification.* A violation(s) may result in disqualification of an Alpine contestant if he or she does not comply with International Ski Federation (FIS) rules and/or United States Ski Association (USSA) standards. In addition, an Alpine contestant may be disqualified if he or she:

6.2.4.1 Fails to compete with an official team uniform (see Rule 5.1.8); or

6.2.4.2 Violates the tobacco rule (see Rule 5.1.6).

6.2.5 *After Clear Disqualification.* A racer who clearly is disqualified for missing a gate may not continue through further gates nor start in the second run.



A racer who blatantly disqualifies himself or herself and continues on the course may be declared ineligible for the next collegiate race start by the competition jury, regardless of discipline. This restriction shall carry over to the next collegiate season.

The decision of a jury may be appealed to the NCAA Skiing Committee during the NCAA championships or to an appeals committee from the respective region during the regular season.

- 6.2.6 *Rerun*. Reruns will be governed by International Ski Federation (FIS) rules and/or United States Ski Association (USSA) standards.

### 6.3 Slalom

- 6.3.1 *Definition*. A slalom race shall be governed by International Ski Federation (FIS) rules and/or United States Ski Association (USSA) standards.

In collegiate meets, a slalom shall consist of two runs on either one course or two different courses.

- 6.3.2 *Forerunners*. Forerunners shall be governed by International Ski Federation (FIS) rules and/or United States Ski Association (USSA) standards.

- 6.3.3 *Second-Run Starting Order*. The second-run starting order will be governed by International Ski Federation (FIS) rules and/or United States Ski Association (USSA) standards.

- 6.3.4 *Disqualification*. A violation(s) may result in disqualification of an Alpine contestant if he or she does not comply with International Ski Federation (FIS) rules and/or United States Ski Association (USSA) standards. In addition, an Alpine contestant may be disqualified if he or she:

6.3.4.1 Fails to compete with an official team uniform (see Rule 5.1.8);

6.3.4.2 Violates the tobacco rule (see Rule 5.1.6); or

6.3.4.3 Receives assistance in recovering lost equipment (see Rule 6.1.3).

- 6.3.5 *After Clear Disqualification*. A racer who clearly is disqualified for missing a gate may not continue through further gates nor start in the second run.

A racer who blatantly disqualifies himself or herself and continues on the course may be declared ineligible for the next collegiate race start by the competition jury, regardless of discipline. This restriction shall carry over to the next collegiate season.

The decision of a jury may be appealed to the NCAA Skiing Committee during the NCAA championships or to an appeals committee from the respective region during the regular season.

- 6.3.6 *Video*. It is recommended that video control be used in all slalom events.

- 6.3.7 *Rerun*. Reruns will be governed by International Ski Federation (FIS) rules and/or United States Ski Association (USSA) standards.

### 6.4 Timing

Timing shall be governed by International Ski Federation (FIS) rules and/or United States Ski Association (USSA) standards.

---

# RULE 7

## Protests and Appeals— Alpine

---

### 7.1 Alpine Decisions

Coaches or team representatives (institutional personnel) who desire to protest a disqualification shall do so within 15 minutes of the posting of the referee report. A protest fee, not to exceed \$75, shall be charged. The fee is refundable if the protest is upheld by the jury.

The jury may consider video from a coach or team representative (institutional personnel) showing evidence of a rules infraction by a competitor. The evidence must be on video, be filed within five minutes of the posting of the referee report, and be accompanied by the appropriate fee. The names of those competitors under review (but not on the referee report) shall be posted five minutes after and next to the referee report. Coaches or team representatives (institutional personnel) of the competitor under review may provide evidence showing proof that no rules violation occurred. The evidence must be on video and filed within 10 minutes of the posting of the names under video review.

The technical delegate thereupon shall summon the jury to hear the evidence of any officials or witnesses who have witnessed the event in question or it may review videotapes of the event. The burden of proof shall rest upon the contestant, and the gatekeeper's decision shall be accepted in the absence of weighty evidence that an error has been committed.

Protests shall be relayed to the finish promptly.

Note: The race jury may extend protest time limitations due to special circumstances.

### 7.2 Clerical Errors

A complaint based not on an alleged breach of the rules on the part of an official or a contestant, but on an alleged error in calculating the results, shall be considered by the race committee if reported before the race committee disbands.

Such a protest made at a later date must be made by the representative of a competing college by registered mail to the chair of the games committee within one month of the date of the race.

If the mistake is verified, a corrected result shall be published and the prizes redistributed, if necessary.

### 7.3 Sportsmanship

A competitor and/or his/her coach and/or official team representative may withdraw the competitor(s) officially posted result based on sportsmanship. The

withdrawal must be approved by the games committee. Competitors originally placed behind a withdrawn competitor will be moved up.

---

# RULE 8

## Technical Regulations and Arrangements for Cross Country Events

---

### 8.1 Technique Definitions

Technique definitions shall be governed by International Ski Federation (FIS) rules and/or United States Ski Association (USSA) standards.

### 8.2 Cold Weather Precautions

There are four factors to be considered by the jury regarding cold weather safety.

8.2.1 *Temperature.*

8.2.2 *Wind.*

8.2.3 *Humidity.*

8.2.4 *Course.* (for example, open/protected, long, fast downhills, etc.).

If the temperature reaches minus 20 degrees Celsius (minus 4 degrees Fahrenheit) or colder, the jury must meet to determine whether the race should be held as scheduled, postponed or canceled. The distance of the scheduled race may be shortened to reduce the duration of exposure to the cold.

### 8.3 Guidelines for the Cross Country Course

Guidelines for the cross country course shall be governed by International Ski Federation (FIS) rules and/or United States Ski Association (USSA) standards.

### 8.4 Course Specifications

Course specifications shall be governed by International Ski Federation (FIS) rules and/or United States Ski Association (USSA) standards.

### 8.5 Measuring the Course

Measuring the course shall be governed by International Ski Federation (FIS) rules and/or United States Ski Association (USSA) standards.

### 8.6 Marking the Course

8.6.1 The marking of the course shall be so clear that the competitor is never in doubt as to its direction.

8.6.2 Signs located at 1-kilometer intervals shall mark the distance skied along the course.

8.6.3 Corners and intersections shall be fenced or flagged off clearly, so that there is no chance for the competitor to deviate from the correct course. At intersections where a competitor shall make a choice of courses, large, visible arrows and signs with the necessary information shall be posted. Course controllers should be located at these points.

### **8.7 Preparation of the Course**

Preparation of the course shall be governed by International Ski Federation (FIS) rules and/or United States Ski Association (USSA) standards.

8.7.1 *Preseason.* Preseason preparation of the course shall be governed by International Ski Federation (FIS) rules and/or United States Ski Association (USSA) standards.

8.7.2 *Classical-Technique, Interval-Start Competitions.* Preparation of the course for classical-technique, interval-start competition shall be governed by International Ski Federation (FIS) rules and/or United States Ski Association (USSA) standards.

8.7.3 *Freestyle Technique.*

8.7.3.1 Freestyle technique shall be governed by International Ski Federation (FIS) rules and/or United States Ski Association (USSA) standards.

8.7.3.2 For mass-start competitions using the freestyle technique, the number of lanes at the start will be determined by the space and terrain available and the size of the field.

8.7.4 *Classical-Technique, Mass-Start Competitions.* For mass-start competitions using the classical technique, the number of lanes at the start will be determined by the space and terrain available and the size of the field. When tracks converge, there should be a short zone (5 to 10 meters) of no tracks.

*[Note: In these zones, the freestyle technique is not permitted. After the start area, the number of tracks set on the course should be determined by the technical delegate and chief of course (with consultation of the team captains) in order to provide safe and equitable conditions for all competitors.]*

### **8.8 General Preparation**

8.8.1 The course should be prepared with mechanical equipment.

8.8.2 The course should be prepared to the following widths:

8.8.2.1 Three meters minimum for individual-start classical races.

8.8.2.2 Four meters minimum for individual-start freestyle and mass-start classical races.

8.8.2.3 Six meters minimum for mass-start freestyle races.

8.8.3 Where two tracks are used, they should be 1 to 1.20 meters apart, measured from the middle of each set of tracks.

8.8.4 The race courses, including the start area, lap area and the finish area, must be clearly marked and completely prepared for the official training day(s) for the competition. Start signs, finish signs, lap signs, directional arrows and kilometer markers must be in place for the official training day(s). The course shall be marked for unofficial training days with directional arrows in place.

8.8.5 During the competition, the same conditions should be ensured for all competitors. During snowy or windy conditions (where drifting is possible), it is recommended that groups of forerunners should be sent around continuously to keep the course open.

8.8.6 The technical delegate and chief of race shall be responsible for course preparation, including the line of the set track in the last 200 meters.

## **8.9 Current Information**

In the start/finish area, there should be:

8.9.1 Scoreboards for posting unofficial results and disqualifications;

8.9.2 Temperature board for recording and posting the air and snow temperature at the high and low points of the course. The board must display temperatures two hours before the first competitor starts and at every half-hour interval until one hour after the first competitor starts; and

8.9.3 Loudspeakers for broadcasting current information. The loudspeakers shall be placed so that the timers are not disturbed in their work.

## **8.10 Cross Country Start/Finish Area**

8.10.1 A section of the course should be prepared with a well-designed start/finish area.

8.10.2 The start/finish area should be functional; divided; and controlled as necessary by gates, fences and marked zones. It should be prepared in such a way that:

8.10.2.1 The race course may pass through it several times;

8.10.2.2 Competitors, coaches, officials, media, service people and spectators may reach their respective areas easily and without interference with competitors; and

8.10.2.3 There is adequate space to carry out individual and relay starts (the finish can be as long as required by the rules).

8.10.3 Competitors should be able to reach the following areas without being disturbed:

8.10.3.1 The team preparation area;

8.10.3.2 The warmup track;

8.10.3.3 Equipment control area;

8.10.3.4 The storage area for competitors' warmup clothing;

8.10.3.5 The start and finish zones;

8.10.3.6 The through-lap or relay-exchange zone;

8.10.3.7 The ski-control area beyond the finish line;

8.10.3.8 The refreshment area; and

8.10.3.9 The entrance/exit area.

8.10.4 Competition officials and jury members should have good working conditions. Coaches, officials, media and service people should have proper working zones within the start/finish area so that they can work without disturbing the process of the start/finish. The entry of these people to specific zones within the start/finish area may be regulated by accreditation.

- 8.10.5 Timekeeping and calculation should be located in a building with a good view of the start/finish.
- 8.10.6 *The Start Line.* The start line shall be governed by International Ski Federation (FIS) rules and/or United States Ski Association (USSA) standards.
- 8.10.7 *The Finish Zone.* The finishing zone shall be governed by International Ski Federation (FIS) rules and/or United States Ski Association (USSA) standards.
- 8.10.8 *The Finish Line.* The finish line shall be governed by International Ski Federation (FIS) rules and/or United States Ski Association (USSA) standards.
- 8.10.9 Toilets should be available for the competitors near the start/finish area.
- 8.10.10 Major race officials and jury members should be provided with a work room in the immediate vicinity of the start/finish area.
- 8.10.11 Warmup tracks for wax testing and warmup should be located near the start/finish area. Outgoing tracks for competitors, coaches and officials should be provided along the start/finish area and on the course. Warmup tracks and outgoing tracks should be fenced off and may be used only with special accreditation.
- 8.10.11.1 *WarmUp Tracks.* Warmup tracks must be provided. Tracks separate from the race course are preferable. Separate warmup tracks should be clearly marked and must be separated from the competition course. Warmup areas in low snow circumstances fall to the decision of the jury. At no time will designated warm-up areas allow skiing backward on the race course. Cutoffs for on-course warmup areas are highly encouraged but must be clearly marked closed during competition.
- 8.10.11.2 *Testing Tracks.* Ski testing tracks must be provided. Tracks separate from the race course are advisable, but portions of the race course may be used for ski testing. For classic competitions, a significant uphill with tracks should be provided for testing. If ski testing will not be allowed on the course, 1) it must be open only to properly accredited coaches during competition; 2) cutoff loops for on-course ski testing are strongly advised; and 3) at no time will backward skiing on the race course be allowed.
- 8.10.12 *Immediate-Concern Area.* The immediate-concern area is designated to provide for the immediate health needs of the competitor after the competition. The following should be provided in the immediate-concern area:
- 8.10.12.1 Refreshments (fluid and solid) for competitors;
- 8.10.12.2 Medical personnel to examine the competitors and evaluate any conditions that might potentially threaten the health of the student-athlete; and
- 8.10.12.3 Convenient exit to protected area.

## 8.11 Mass-Start Area

The mass-start area shall be laid out according to one of the following two methods:

- 8.11.1 *Chevron Start*. Odd number of lanes should be used with No. 1 in the center lane, even numbers to the right and odd numbers to the left of center. Each start marker must be 1 meter behind the preceding start number. The first start marker of the chevron of each subsequent row must be 1 meter behind the outermost marker on each row.
- 8.11.1.1 The chevron start method may be used on courses that do not allow for a long, wide and straight start area in order to best facilitate a fair start for all competitors.
- 8.11.1.2 In a chevron start, the lanes should be 1 to 2 meters apart and in rows 1 meter apart. Eleven lanes are recommended with a minimum of seven lanes.
- 8.11.2 *Conventional and Team Start*.
- 8.11.2.1 The start line is an arc of a circle with a radius of 100 meters. The arc is swung from a point on the center track 100 meters from the starting point on that track. In the event of uneven terrain, the start line should be set so that each competitor has the same distance to the first turn. Where terrain permits, the lanes must be 2 meters apart, with an adequate number of tracks for the field of competitors. When more than one start row is required, additional rows may be created. Each additional start line (row) must be a concentric arc 3 meters behind the previous line.
- 8.11.2.2 The first kilometer of the course should have no sharp bends or narrow sections.
- 8.11.2.3 *Classical-Technique Competitions*. The mass start should have 100 meters of parallel tracks where the competitors must neither change nor leave the tracks. Over the next 100 meters, these tracks should converge into half the original number of tracks. After that, they should converge into two or three sets of tracks and eventually into one or two sets of tracks for the remainder of the course.
- 8.11.2.4 *Freestyle-Technique Competitions*. The mass start should have 100 meters of parallel tracks where the competitor must neither change nor leave the tracks. Skating in the first 100 meters is prohibited. After this zone, there should be at least 100 meters without tracks.

## **8.12 Finish Zone and Relay Finish Line**

The finish zone and relay finish line shall be governed by International Ski Federation (FIS) rules and/or United States Ski Association (USSA) standards.

For mass-start competitions, Rule 8.8.6 applies.

## **8.13 Relay-Exchange Zone**

The relay-exchange zone shall be governed by International Ski Federation (FIS) rules and/or United States Ski Association (USSA) standards.

## **8.14 Individual Sprint Competition**

- 8.14.1 Individual sprint competitions will be governed by International Ski Federation (FIS) rules and/or United States Skiing Association (USSA) standards.
- 8.14.2 Regional sprint competition can use the Advance-By-Order-Of-Finish system. Only the individual start qualification is timed. After the individual



ranking is established. Appendix B can be used to establish sprint brackets. Eighteen, 24 or 30 individuals can advance. No timing is done for the heats. A finish line camera and spotters for establishing order of finish are required. The race jury makes the final decision on close finishes.

---

# RULE 9

## Event Officials— Cross Country

---

### Race Committees

#### 9.1 Function

The race committees shall be responsible for all technical aspects in the conduct of the competition, including course selection and preparation. They shall approve the appointment and replacement of all subordinate officials. The race committees shall be composed of the chief of race (chair), technical delegate, assistant technical delegate, chief of start, chief of finish, chief of course, chief of calculation and chief timer. Duties of other officials as listed in this rule may be combined or are optional as conditions dictate. It is the responsibility of all race officials to enforce infractions of all rules.

### Technical Delegate

#### 9.2 Selection

The technical delegate, a person recognized as an authority on ski-meet organization and a guarantor that the competitive rules of the NCAA are administered accurately and impartially, is appointed by the organizing committee.

#### 9.3 Duties

In extenuating circumstances or when there appears to be the possibility of serious danger to the safety of the competitors, the technical delegate or assistant technical delegate may interrupt the official training or race without consulting the jury or organizing committee.

*Discontinuance.* Grounds for discontinuance may include frigid temperatures, high winds, high humidity or combinations thereof, rapid deterioration of visibility below the point when it is not possible to pick out directional or control flags or to judge the gradient of the slope, or where injury of a contestant requires immediate removal and the race course is the only route available for transportation. Course conditions that are hazardous to the safety of the competitors also may be grounds for discontinuance.

The technical delegate shall work effectively with the organizing committee, the race committee, jury and coaches while maintaining independent authority over all matters pertaining to his or her duties outlined in this section:

9.3.1 Assure that the length, differences in height, width, difficulty of the course, etc., comply with NCAA rules and that the start and finish area are suitable for a satisfactory competition;

- 9.3.2 Assure that all efforts will be made in course preparation to guarantee the best and fairest competition possible;
- 9.3.3 Assure that all information for the visiting teams — profiles, plans of the courses, technical data, etc. — is available promptly;
- 9.3.4 Assure that qualified officials are available to guarantee that the competition can be fairly and effectively completed in full conformity with the NCAA rules;
- 9.3.5 Keep in close contact with the organizing committee, the race committee and the coaches in order to make proposals, where necessary, for the improvement and conduct of the competition;
- 9.3.6 Assure that appropriate action is taken to correct any serious danger to the safety of the competition;
- 9.3.7 Act as technical consultant and the chair of the jury;
- 9.3.8 Arrive at the location of the races in sufficient time to perform the duties as outlined in this section;
- 9.3.9 Read the report of the technical delegate of the preceding competition;
- 9.3.10 Ensure that the recommendations of the race committee or those of the preceding technical delegate for the improvement of the course(s), particularly with respect to safety measures, have been carried out;
- 9.3.11 Attend all meetings of the jury and be able to interpret NCAA rules regarding questions by jurors concerning decisions that need to be made;
- 9.3.12 Accompany other members of the jury in the inspection of the course(s) immediately after it has been set;
- 9.3.13 Call a meeting of the jury when the temperature reaches minus 20 degrees Celsius (minus 4 degrees Fahrenheit) to discuss the factors of temperature, wind, humidity and course to determine if the event should be postponed or canceled; and
- 9.3.14 If a situation occurs that is not covered by these rules, the technical delegate shall have discretionary authority to render a ruling.

## **Chief of Race**

### **9.4 Duties**

- 9.4.1 To serve on the jury as a voting member;
- 9.4.2 To conduct all meetings for the consideration of technical questions and chair joint meetings of the race committee and coaches;
- 9.4.3 To direct and coordinate the work of all race officials;
- 9.4.4 To designate the forerunners and postrunners; and
- 9.4.5 To summon the meeting(s) of the race committee.

## **Assistant Technical Delegate**

### **9.5 Duties**

- 9.5.1 To serve on the jury as a voting member;
- 9.5.2 To inspect the course(s) immediately after it is set, accompanied by members of the jury. Any changes in the course shall be made by a majority

vote of this group. If the assistant technical delegate alone accepts the invitation to inspect the course, then his or her decisions are final;

- 9.5.3 To interrupt a race in the case of emergency;
- 9.5.4 To be stationed on the course during the competition to receive reports from the chief of start, chief of finish and other race officials about infractions of the rules, protests and faults. The assistant technical delegate shall post, on the official notice board, names of disqualified competitors, the name of the official who marked the fault and the reason for marking the fault. The exact time the disqualification was posted shall be recorded on the official notice board; and
- 9.5.5 To work closely with the technical delegate. In critical cases, especially those involving the safety of the racers, the direction of the technical delegate is binding on the assistant technical delegate.

## **Chief of Course**

### **9.6 Duties**

- 9.6.1 To select, prepare and maintain the course as decided upon by the race committee;
- 9.6.2 To be responsible for the safe conditions of the course in relation to the abilities of the skiers;
- 9.6.3 To assure that the course conforms to and is set within the rules established by the NCAA;
- 9.6.4 To assure that the course-maintenance crew is in place and is provided with the necessary equipment;
- 9.6.5 To prepare and make available the plans and profiles of the course with the exact measurements;
- 9.6.6 To make prompt and correct preparation and marking of the course for suitable placing of controls;
- 9.6.7 To provide for temperature measurements, fencing of the course, first-aid posts and intermediate timing;
- 9.6.8 To have direct charge of and immediate access to, the chief controller, course setter and chief of course police; and
- 9.6.9 To effectively use the course-preparation group and forerunner, especially if weather or snow conditions are adverse, to ensure that the course is in the best possible condition during the race.

## **Course Setter**

### **9.7 Duties**

- 9.7.1 Set the tracks on the course as prescribed by the race committee under the direction of the chief of course;
- 9.7.2 Be familiar with the terrain, snow conditions and weather to assure setting the best track possible; and
- 9.7.3 Set control and directional flags that provide for the safety of the racer and that clearly define the track.

## Chief Controller

### 9.8 Duties

- 9.8.1 To work under the direction of the chief of course and be responsible for recruiting, assigning and supervising controllers;
- 9.8.2 To advise the controllers of their duties and review the rules of competition;
- 9.8.3 To collect control cards and transmit them to the assistant technical delegate promptly;
- 9.8.4 To monitor compliance with competition rules; and
- 9.8.5 To oversee, in conjunction with the technical delegate and the chief of race, the confidential placement of the controllers. A small number of controllers should be directed to move from point to point during the competition.

## Controllers

### 9.9 Number

The chief of course, along with the technical delegate, should strategically place controllers at selected areas on the course where violations are most likely to occur. It is strongly recommended that a minimum of one controller be placed on the course for each kilometer of the course.

### 9.10 Duties

- 9.10.1 To monitor the passage of all competitors;
- 9.10.2 To monitor compliance with Rule 8.1 regarding restrictions on technique; and Rule 12.4.3 regarding obstruction.
- 9.10.3 To be equipped with writing tools and to record exactly any violations they witness, including:
  - 9.10.3.1 The number of the competitor;
  - 9.10.3.2 The nature of the violation;
  - 9.10.3.3 The point on the course at which the violation occurred (kilometer);
  - 9.10.3.4 The technique used;
  - 9.10.3.5 The type of terrain (straight, curve, uphill, downhill); and
  - 9.10.3.6 The number of repetitions of the violation.
- 9.10.4 To check the competitor's skis after the skier has crossed the finish line to ensure that the competitor finished with at least one marked ski; and
- 9.10.5 To maintain spectator control of the course and to assure that the racer has free access to the course without any outside interference.

Immediately after the race, each controller submits his or her card with specific details of the infraction to the chief controller. If the jury determines that verbal testimony is necessary, the controller must be available after the event.

The controller must be able to explain clearly and unequivocally how the fault occurred. Controllers who have recorded faults must remain available to meet with the jury until the jury decisions are final and the jury releases the controller.

## Chief of Start/Finish

### 9.11 Duties

- 9.11.1 To appoint the starter and finish judges with the approval of the race committee;
- 9.11.2 To assure that the start and finish area is well prepared and secured from spectators;
- 9.11.3 To assure that the starter, ski marker, finish judge, finish checker and appropriate assistants are in place;
- 9.11.4 To assure that there is proper control and conduct of the coaches and racers within the start and finish area;
- 9.11.5 To assure that the rules for the start and finish are applied properly;
- 9.11.6 To assure that no racer in the relay start skates in the prohibited zone. Any infraction must be reported to the assistant technical delegate, giving color and number;
- 9.11.7 To assure that the proper tag within the relay zone is accomplished by the racers. Any infraction shall be reported to the assistant technical delegate, giving color, number, leg of relay and time; and
- 9.11.8 To rectify any discrepancies by the starter, assistant starter or contestant and, when necessary, rule on false starts and recall of contestants.

## Starter

### 9.12 Duties

- 9.12.1 To give appropriate warning and start signals;
- 9.12.2 To assure that racers start at the correct time, in the correct order and when applicable, at the correct intervals;
- 9.12.3 To place an assistant before the start line to send back those racers with skis not marked correctly;
- 9.12.4 To place an assistant a few meters beyond the start line to take appropriate action on the starter's instructions if the racer makes a false start; and
- 9.12.5 To place an assistant(s) 100 meters in front of the mass-start line in the relay; and if there is a false start on appropriate instruction from the starter, the racers shall be barred from continuing.

## Assistant Starter(s)

### 9.13 Duties

- 9.13.1 To summon the racers in ample time, assuring that they start in the proper order;
- 9.13.2 To check off each contestant on the start list as he or she starts; and
- 9.13.3 To assist the starter in performing his or her duties.

## Finish Referee

### 9.14 Duties

- 9.14.1 To determine the order of finish;

9.14.2 To assure that the rules are observed properly and applied at the finish line; and

9.14.3 To assure compliance with the uniform rule (see Rule 10.7).

## **Assistant Finish Referee**

### **9.15 Duties**

9.15.1 To assist the finish referee in performing his or her duties; and

9.15.2 To record the order of finish.

## **Chief of Timing**

### **9.16 Duties**

9.16.1 In cooperation with a sufficient number of timekeepers, the starter and necessary recorders, to be responsible for correct time keeping;

9.16.2 To appoint the recorder(s), the assistant and interval timer(s) when necessary;

9.16.3 To direct and coordinate the efforts of the assistant timers, interval timers and recorders;

9.16.4 To assure that all necessary timing equipment, such as watches, radios or telephones, electronic timing equipment and forms, is available;

9.16.5 To assure that the timing equipment is checked thoroughly and synchronized before and after the event; and

9.16.6 To assure that the racers' times are recorded properly and accurately.

## **Assistant Timers**

### **9.17 Duties**

9.17.1 To time the racers as prescribed by the chief of timing; and

9.17.2 To inform their assigned recorders of the starting number of each racer and the time the racer passed the finish line. There should be at least three timekeepers for every event, the chief timer and two assistants.

## **Recorder**

### **9.18 Duties**

9.18.1 To record accurately the finishing time of each racer given to the recorder by the timer. There should be one recorder for each timer;

9.18.2 To fill out completely the timer's record sheet if one is used;

9.18.3 To repeat to the timer the recorded information to avoid any errors; and

9.18.4 To withhold official results until properly posted by the race secretary.

## **Finish Checker**

### **9.19 Duties**

To check that the racers cross the finish line with at least one ski correctly marked by the ski marker.

## **Chief of Calculation**

### **9.20 Duties**

- 9.20.1 To provide for quick and accurate calculations for individual and team results; and
- 9.20.2 To assure that during the race a result board is available and to assign the recorder, announcer and scoreboard poster(s).

## **Scoreboard Poster(s)**

### **9.21 Duties**

To update continually and record unofficial results on the result board.

## **Announcer**

### **9.22 Duties**

- 9.22.1 To announce the racer on the course;
- 9.22.2 To maintain professional decorum, assuring that all announcements are those essential for conducting a safe and efficient race; and
- 9.22.3 To announce unofficial results (announcers also may announce the racers as they cross the finish line).

## **Coaches' Representatives**

### **9.23 Selection**

The coaches' representative and alternate coaches' representative shall be selected at the orientation meeting for each event by random draw of all teams entered in that event. The coaches' and alternate coaches' representatives shall be affiliated with different teams and shall be knowledgeable in the discipline.

### **9.24 Duties**

- 9.24.1 To serve as a voting member of the jury;
- 9.24.2 To attend all race committee meetings in order to provide coaches' input into the conduct of the meet;
- 9.24.3 To accompany the assistant technical delegate and other members of the jury in the inspection of the courses immediately after they have been set; and
- 9.24.4 The alternate coaches' representative shall attend all jury meetings and shall have a vote only if a decision is required concerning a competitor from the coaches' representative's school. (In such a case, the coaches' representative is disqualified from voting.)

No person can hold more than one position on the jury for any single event.

## **Jury**

### **9.25 Personnel**

The jury for each event shall be made up of the following voting members:



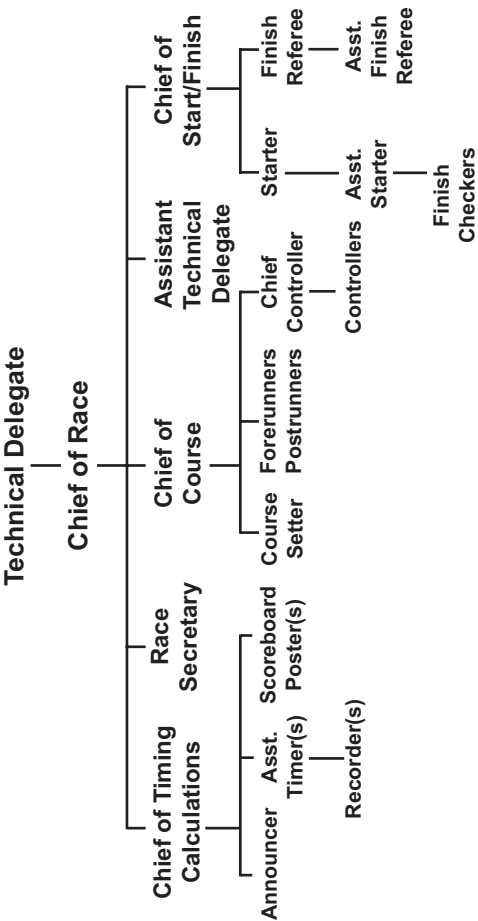
- 9.25.1 The technical delegate, who serves as chair and who has the deciding vote in the case of a tie vote including his or her own vote;
- 9.25.2 The chief of race;
- 9.25.3 The assistant technical delegate; and
- 9.25.4 The coaches' representative. (The alternate coaches' representative shall vote only if a decision is required concerning a competitor from the coaches' representative's school.)
- 9.25.5 The jury must be pre-approved by the games committee and a full disclaimer of possible conflicts of interests for all jury members must be made before serving on the jury.

No person can hold more than one position on the jury for any single event. Competitors may not serve as jury members. Nonvoting members include the chief of start/finish. The same jury may be used for all competitions on the same day.

## **9.26 Duties**

- 9.26.1 To inspect the courses before the event and ensure that they are in the best possible condition. Particular attention should be paid to the following points: sufficient snow depth and preparation; sufficient protection of all danger spots; inspection of medical and rescue facilities; inspection of start/finish areas; and inspection of established course-control and crowd-control barriers.
- 9.26.2 Ensure that competition is conducted in accordance with NCAA rules; make recommendations on cancellation, discontinuance or postponement of competition to the technical delegate or games/organizing committee; and care for all matters not otherwise prescribed;
- 9.26.3 To adjudicate any protests and questionable disqualifications resulting from an event when directed by the technical delegate. Films, videotape and/or testimony can be used by the jury; and
- 9.26.4 To supervise the conduct of the events.

Cross Country Race Officials



---

# RULE 10

## Competitors, Seeding, and Start and Finish—Cross Country

---

### Competitors

#### 10.1 Designated Team Scorers

For regular-season events, up to six men and six women from a team may compete in the individual events for the team score, with the highest-finishing three in each to count in the team scoring. Only men may compete in men's events and only women may compete in women's events.

A relay team is made up of three competitors. Additional skiers may compete as designated non-team scorers. Designated non-team scorers must ski on the nonscoring relay or mixed-relay team. A mixed-relay team is composed of four competitors, two males and two females. Designated non-team scorers, nonscoring relay teams and nonscoring mixed-relay teams do not displace points.

#### 10.2 Entries

The deadline for all entries and the names of all entrants, including alternates (if applicable), and their seeding or starting order shall be submitted to the sponsoring institution before the start of the meet. The final team seeding or starting order for each event shall be submitted to the chief of race or race secretary at the orientation meeting.

Any team or individual failing to comply with the above may be prohibited from entering. A competitor is considered to be entered in the meet when he or she starts any single event. At this point, the individual is counted against the total number of competitors allowed for that institution at that competition.

#### 10.3 Substitution

10.3.1 A sick or injured designated team scorer may be replaced up to one hour before the start of the competition. No change in seed will occur; and

10.3.2 Once a team has reached its team-size limits (that is, 12 men and 12 women), no substitution for subsequent events is permitted.

## **10.4 Conduct**

All competitors are expected to conduct themselves in a sporting manner and to present a personal appearance that will reflect the highest credit upon the sport and their institutions. Competitors who bring discredit to their colleges or the sport may be disqualified from the race being contested by a majority vote of the competition jury.

Coaches or other team personnel who are disqualified by a race official must immediately depart the competition area for the duration of the race being contested.

## **10.5 Tobacco Use by Team Personnel**

Student-athletes, coaches and other team personnel who use tobacco in the competition arena shall be disqualified by any race official from the race during which the violation occurred.

## **10.6 Knowledge of Rules**

It is recommended that the contestants study these rules as they are obligated to observe all NCAA regulations and any special regulations established by the race committee.

## **10.7 Uniforms**

10.7.1 During competition and while accepting awards, skiers must wear their official team uniform. Uniforms shall meet the following conditions:

10.7.1.1 Uniforms must be team-issued, of the same predominant color and substantially similar, and cover the entire midriff. (See NCAA Bylaw 12.5.4, Use of Logos on Equipment, Uniforms and Apparel.)

10.7.1.2 If T-shirts or singlets are worn, they shall match in color and graphics, cover the entire midriff and be team-issued. If more than one student-athlete wears a T-shirt for an event, all of the team's competitors in that event who wear T-shirts shall wear matching T-shirts.

10.7.2 An institution's uniform or any item of apparel (for example, team jersey, socks) that is worn by a student-athlete while representing the institution in intercollegiate competition may contain only a single manufacturer's or distributor's logo or trademark on the outside of the apparel (regardless of the visibility of the logo or trademark). The logo or trademark shall be contained within a four-sided geometrical figure (that is, rectangle, square, parallelogram) that does not exceed  $2\frac{1}{4}$  square inches.

10.7.3 If an institution's uniform or any item of apparel worn by a student-athlete in competition contains washing instructions on the outside of the apparel on a patch that also includes the manufacturer's or distributor's logo or trademark, the entire patch must be contained within a four-sided geometrical figure (that is, rectangle, square, parallelogram) that does not exceed  $2\frac{1}{4}$  square inches.

10.7.4 The restriction on the size of a manufacturer's or distributor's logo is applicable to all apparel worn by student-athletes during the conduct of the institution's competition, which includes any premeet or postmeet activities (for example, postmeet celebrations on the course, pre- or postmeet press conferences) involving student-athletes.

10.7.5 Failure to comply with this regulation may jeopardize a contestant's eligibility.

10.7.6 A student-athlete shall not wear any apparel that identifies another entity other than the student-athlete's institution. Headwear shall be free of all marks other than institutional logos and NCAA-compliant manufacturer's logos.

*Exception:* One flag patch (country, state or city) is allowed on the uniform or equipment.

*Exception:* One memorial patch or insignia is allowed on the uniform or equipment.

## **Competition Program, Order, Draw, Seeding and Race Numbers**

### **10.8 Events**

10.8.1 The cross country competition program may include individual competitions at approved distances in classical or freestyle techniques, using either interval, mass-start, sprint or pursuit formats, and/or a relay, mixed-relay sprint or sprint-relay competition using one or both techniques. When both techniques are used in a relay, the classical legs shall ski first and the freestyle legs last.

10.8.2 The host institution or governing association shall determine the competition program for the meet. This information shall be made clear in the invitation or announcement of the meet. Information shall be specific regarding start times, course locations, techniques, distances, start formats, and whether the events are individual or relay.

### **10.9 Mixed Relay**

10.9.1 A mixed-relay team is made up of two male and two female competitors.

10.9.2 The technique used in the mixed relay may be classical, freestyle or mixed as determined by the host institution.

10.9.3 Each team shall follow the same order as determined by the host institution.

10.9.4 The host institution shall determine whether one or two teams shall be counted as official scoring teams. Schools may enter additional nonscoring teams.

### **10.10 Seeding, The Draw, Racing Order**

10.10.1 Team seeding, FIS and/or USSA and/or CFIS seeding may be used for both individual and mass-start competitions.

*Notes:*

1. *The games committee shall determine the starting position of all seeds upon recommendation of the jury.*
2. *The NCAA Men's and Women's Skiing Committee shall determine the starting order of the NCAA National Collegiate Men's and Women's Skiing Championships mass start as defined in the National Collegiate Men's and Women's Skiing Championships Handbook.*

10.10.1.1 For team seeding for individual competition, the start order of the members of each team shall be decided by the team's coach. Coaches shall submit their team's starting order to the meet director with their entries. Separate random drawings shall be made by rounds for each event. Coaches shall have the option of passing any round if the entry is short of the maximum number of entries.

10.10.1.2 For individual competition at the NCAA championships, the seed with the highest-ranked regional student-athletes shall be drawn randomly. Subsequent student-athletes shall compete in order by regional ranking, alternating by region.

#### 10.10.2 *Mass-Start Competitions.*

10.10.2.1 *Team Start.* Each competing institution is given one lane. The order of start for competitors from each institution is determined by the coach. The total number of competitors from each institution will determine the number of rows in each lane.

10.10.2.2 *Conventional Start.* In the individual mass-start competition, the first-seed group shall be placed on the first row, the second group on the second row, and so on, up to the number of seed groups in the meet. When terrain and snow conditions permit, the technical delegate and chief of race may allow all competitors to start on the front row. Lanes shall be allocated by random draw or seeding. The first-drawn, or top-seeded, skier will draw lane No. 1 (the center track). The second-drawn, or second-ranked, skier will draw lane No. 2 (immediately to No. 1's right). The third-drawn, or third-ranked, skier will draw lane No. 3 and start immediately to No. 1's left. All even numbers will start to No. 1's right, and all odd numbers will start to No. 1's left. Competitors in all rows must stand with the toe of each boot behind the start line.

10.10.2.3 *Chevron Start.* The first-drawn or highest-seeded skier shall be placed on the first row, lane one. The second-drawn or second-highest seeded skier shall be placed on row two, lane two. The third-drawn or third-highest seeded skier shall be placed on row two, lane three. The fourth and fifth skiers shall be placed in row three, sixth and seventh skiers in row four, and so on until all the lanes have been used. Once all the lanes have been filled for the first chevron, a second chevron is formed behind the first. The next drawn or ranked competitor will be placed in lane one in the same row as the last-drawn competitor. Subsequent student-athletes will be placed using the same method as the first chevron. Additional chevrons will be used until all the student-athletes in the race have been placed in rows. All even numbers will start to No. 1's right and all odd numbers will start to No. 1's left.

10.10.2.3.1 The decision as to whether a conventional or chevron start will be used will be determined by the games committee with input from the presiding jury.

10.10.2.4 For mass-start competitions at the NCAA championships, the first three starters will be determined by a rotation of the region's top-ranked competitors. Subsequent competitors shall start in order of regional

ranking, alternating by regions (as explained in the championships manuals).

- 10.10.3 *Relay*. Coaches shall submit a start list for a relay consisting of three skiers for a single-gender relay and four skiers for a mixed relay in their anticipated start order and up to two alternates.

These alternates may be members of a nonscoring relay team and may ski on the nonscoring team if not substituted for a member of the official scoring team(s). Changes may be made in the relay running order or alternates substituted up to 30 minutes before the start of the relay. Each team may enter nonscoring relay squads in addition to the official scoring team(s). The starting positions for the teams in the relay may be determined by draw or by seeding according to the team score of the previously contested individual cross country event. (See Rule 10.11 for relay-start positions.)

### 10.11 Relay-Start Positions

- 10.11.1 All scoring teams will start on the front row. The first-drawn team or the first-place team from the previously contested individual cross country event starts in the middle track (lane one); the second-place team or second-seeded team starts in the lane to the right of the skier (skier's right) in lane one (lane two); the third-place team or third-seeded team starts in the lane to the left of the skier (skier's left) in lane one (lane three); and so on. All even-numbered place finishers start to the right of the skier (skier's right) in lane one, and all odd-numbered skiers start to the left of the skier (skier's left) in lane one.

- 10.11.2 Where terrain permits, all relay teams will start on the start line (front row). When terrain or conditions do not permit all teams to start on the front row, only scoring teams shall start in the available lanes in the front row. Any nonscoring teams shall start directly behind the scoring teams of the same institution in the second row on an arc concentric with and 3 meters behind the front row. Start rows may be added as necessary to accommodate other nonscoring teams. All official teams will start simultaneously.

- 10.11.3 In a mixed-relay event in which the host institution has determined that there shall be two scoring teams, if there is not sufficient space on the starting line for all scoring teams, the second scoring team from each institution shall start directly behind the first team in the same lane. Designated nonscoring mixed-relay teams shall start in the third row directly behind their institution's scoring teams.

### 10.12 Race Numbers

Race numbers shall be governed by International Ski Federation (FIS) rules and/or United States Ski Association (USSA) standards.

### 10.13 Relay Bib Color Code

The relay bib color code shall be governed by International Ski Federation (FIS) rules and/or United States Ski Association (USSA) standards.

## **Start and Finish**

### **10.14 Start Commands**

Start commands shall be governed by International Ski Federation (FIS) rules and/or United States Ski Association (USSA) standards.

### **10.15 Competitors, Seeding and Start and Finish — Cross Country Pursuit**

Competitors, seeding, and start and finish shall be governed by International Ski Federation (FIS) rules and/or United States Ski Association (USSA) standards.

### **10.16 Early/Late Starts in Cross Country and Relay**

Early/late starts in cross country and relay shall be governed by International Ski Federation (FIS) rules and/or United States Ski Association (USSA) standards.

### **10.17 Determination of Finish**

The determination of finish shall be governed by International Ski Federation (FIS) rules and/or United States Ski Association (USSA) standards.



---

# RULE 11

## Timing—Cross Country

---

### Timing

#### 11.1 Primary Timing

11.1.1 *Electronic timing.* Electronic timing (light beam) should be used as the primary timing system. The contestant's time shall be the period between the breaking or making of the starting contact and the contact at the finish. The contact to be broken at the finish shall be placed at a height of 25.4 to 50.8 centimeters (10 to 20 inches) from the ground. When using electronic timing, all "actual" start times during the 3-2-1-0-1-2-3-second window should be recorded by hand timing to the tenth of a second, and those times should be used in case of failure of the primary electronic timing system.

11.1.2 *Hand timing.* Synchronized watch timing may be used to calculate the elapsed time of a racer's travel from the start to the finish of a race run. With synchronized timing, the start and finish watches shall be started at precisely the same time or shall be set at the precise time of day before the competition begins. The start-watch split time (time of day) shall be recorded according to when the racer's feet contact the starting wand or leave the starting gate. The finish-watch split time (time of day) shall be recorded according to when the toe of the racer's first foot crosses the finish line. The racer's elapsed time shall be determined by calculating the difference between the start and finish times.

11.1.3 When hand timing is used as the primary timing system, a minimum of two watches shall be used. To ensure consistency with hand timing, the same timing personnel should remain active for an entire race.

11.1.4 Reserve watches shall always be used by all parties to preclude failure.

#### 11.2 Secondary Timing

Secondary, completely independent hand timing shall be used in addition to the primary electronic timing system.

#### 11.3 Failure of Electronic Timing

If the electronic timing (light beam) breaks down completely during the race, the times taken by hand throughout the entire race shall be valid.

#### 11.4 Watch Discrepancies

If upon checking watches at the end of an event, a discrepancy is found, this difference shall be considered to have changed at a uniform rate during the period for which the watches were checked.

If the timer's watch has gained upon the starter's watch, the corrections shall be subtracted from the contestants' absolute times; and if the timer's watch has lost on the starter's watch, the corrections shall be added to the contestants' absolute times.

All corrections made to a contestant's time shall be based on the time the contestant finished. The total discrepancy found when checking watches at the end of a race shall be prorated for each contestant's finishing time in the ratio that the elapsed time from synchronization of watches to the time of finishing of the contestant bears to the total elapsed time between synchronizing and checking of watches. Such elapsed time shall be based on the timer's watch.

If minor discrepancies occur between the corrected recorded times of the timekeepers, if uniformly in one direction, the chief timer's report shall be used, while if otherwise, the average of the two or more records shall be used.

If the discrepancy exceeds five seconds uniformly in one direction, the decision as to which set of records to use shall lie with the assistant technical delegate or, if deemed necessary, may be referred to the race committee.

### **11.5 Recording Time**

The recording of times and results shall be governed by International Ski Federation (FIS) rules and/or United States Ski Association (USSA) standards.

11.5.1 For interval starts, if two or more competitors have the same finish time, they shall have the same placing in the results and the competitor with the lower starting number shall be listed first.

11.5.2 In mass-start races, finish places shall be recorded and used for scoring even if the times are within the same tenth of a second, with the places determined by sight or use of a video with frame-by-frame playback capabilities. If a winner cannot be determined in this manner, a tie shall be declared.

---

# RULE 12

## Competition— Cross Country

---

### Cross Country

#### 12.1 Equipment

Equipment shall be governed by International Ski Federation (FIS) rules and/or United States Ski Association (USSA) standards.

#### 12.2 Training

Two days before the start of competition, unofficial training venues should be open and the race course should be marked with directional arrows for training. Official training shall be held the day before each competition as allowable. For official training, the start/finish area and the entire course shall be marked as it will be for competition.

#### 12.3 Forerunners

Forerunners shall be available and used at the discretion of the chief of race.

#### 12.4 During Competition

12.4.1 The competitors shall follow the flagged track from the start and pass through all controls. Competitors shall complete the course on at least one of the skis used at the start.

12.4.2 During the race:

12.4.2.1 Both poles may be exchanged.

12.4.2.2 A competitor must finish the competition with at least one of the skis used at the start. A competitor is allowed to change a ski but only due to equipment failure. A ski may be exchanged more than once during the competition.

*Note: The intent of this rule is to permit a competitor in collegiate (team) skiing the opportunity to finish the course on two unbroken skis (improper fit or wax are NOT considered equipment failure).*

12.4.2.3 In classical technique competitions, competitors may scrape their skis to remove snow and ice and add wax as necessary.

12.4.2.4 Outside assistance for Rules 12.4.2.1, 12.4.2.2 or 12.4.2.3 above is limited to providing supplies and/or equipment only. Competitors can only be handed tools and materials that are available in retail stores (wax, scrapers, corks). The competitor must work on his or her equipment outside the track so as not to interfere with other competitors and without assistance from anyone.

- 12.4.2.5 Feeding may be done by team representatives with proper course accreditation and shall be governed by International Ski Federation (FIS) rules and/or United States Ski Association (USSA) standards.
  - 12.4.3 A competitor who is being overtaken by another competitor shall, at the first audible request (other types of requests as determined by meet officials may be necessary for hearing- or vision-impaired competitors), move to the side and give the overtaking skier adequate room to pass unhindered:
    - 12.4.3.1 At competitions using the classical technique, even if the course has two tracks;
    - 12.4.3.2 At competitions using the freestyle technique, even if the movement results in a restriction of movement of the skier being overtaken;
    - 12.4.3.3 In mass-start competitions, a competitor has to yield for an audible request if there is a gap of two ski lengths or more with the competitor(s) skiing directly in front of the competitor who is being asked to yield. If contact is kept, a competitor does not have to yield for an audible request but may choose to do so. *Exception: For FIS homologated freestyle or classic mass start race courses, FIS rules of overtaking apply.*
    - 12.4.3.4 Except in the finish zone and in the relay exchange zone (final leg).
  - 12.4.4 Finish zone rules shall be governed by International Ski Federation (FIS) rules and/or United States Ski Association (USSA) standards.
  - 12.4.5 In the finish zone, skiers shall not be required to give way when track is requested, but they may do so. Upon reaching the finish zone, a competitor selects and enters one of the finish lanes and must stay entirely in that lane until crossing the finish unless it is necessary to leave that lane in order to overtake another competitor. By changing lanes, a competitor shall not impede the progress of another competitor.
  - 12.4.6 Accidents or racers giving up should be reported to the next control or at the finish.
  - 12.4.7 The competitor must comply with the direction of the race officials and shall not intervene in the organization of the competition.
  - 12.4.8 No pacing shall be allowed by a noncompetitor except as defined below. Pacing is defined as traveling on the official race course directly behind, in front of or beside a competitor for any length of time. *Exception: Team representatives with proper course accreditation are allowed to pace for up to 30 meters in order to give splits and encouragements to a competitor.*
  - 12.4.9 Pushing or pulling a competitor along the racing track by a non-competitor is illegal and shall result in disqualification.
- The race track must be kept clear for other competitors on the course.

## 12.5 Disqualification

Competitors in cross country may be disqualified by the race jury if they:

- 12.5.1 Enter the race under false pretenses;
- 12.5.2 Do not follow the marked courses (try to take a shortcut) or do not pass all of the controllers;
- 12.5.3 Receive unauthorized assistance;

- 12.5.4 Fail to give way to an overtaking competitor when so requested, or clearly obstruct another competitor;
- 12.5.5 Run part of the course without skis on their feet or finish with two different skis than race was started with;
- 12.5.6 Violate Rule 8.1 regarding technique definitions;
- 12.5.7 Compete on the course with equipment not compliant with Rule 12.1;
- 12.5.8 Violate any rule for competition in Rule 12.4;
- 12.5.9 Fail to compete with the official team uniform (see Rule 10.7); or
- 12.5.10 Fail to comply with the tobacco rule (see Rule 10.5).

### **Relay/Mixed Relay**

**(In addition to cross country rules)**

#### **12.6 Relay Exchange**

The relay-exchange zone shall be governed by International Ski Federation (FIS) rules and/or United States Ski Association (USSA) standards.

#### **12.7 Total Relay Time**

The total relay time shall be governed by International Ski Federation (FIS) rules and/or United States Ski Association (USSA) standards.

#### **12.8 Relay Team**

No racer shall be permitted to run more than one leg of the relay.

#### **12.9 Disqualification**

Competitors in the cross country relay may be disqualified for all violations listed under Rule 12.5. First-leg skiers shall stay in their assigned lanes with both skis in the tracks for the first 100 meters. Changing tracks and freestyle are prohibited in the first 100 meters. Failure to comply may result in disqualification.

---

# RULE 13

## Protests and Appeals— Cross Country

---

### Protests

#### 13.1 Nordic Decisions

Coaches or team representatives (institutional personnel) who desire to protest shall do so within 15 minutes after the posting of the unofficial results after the last race of the day. A protest fee, not to exceed \$75, shall be charged. The fee is refundable if the protest is upheld by the jury.

The technical delegate may consider a protest of an infraction of the rules by a racer. This protest shall be filed by at least three separate institutions in any combination of racers, coaches or team representatives (institutional personnel).

The technical delegate shall not consider any protest by a spectator or any other noncontestant except at the request of one of the officials. The technical delegate thereupon shall summon the jury to hear the evidence of any officials or witnesses who have witnessed the event in question, or it may review videotapes of the event.

Note - The race jury may extend protest time limitations due to special circumstances.

#### 13.2 Nordic Redress

A contestant in a cross country race who suffers from an intrusion shall have no redress.

#### 13.3 Clerical Errors

A complaint based not on an alleged breach of the rules on the part of an official or a contestant, but on an alleged error in calculating the results, shall be considered by the race committee if reported before the race committee disbands.

Such a protest made at a later date shall be made by the representative of a competing college by registered mail to the chair of the games committee within one month of the date of the race.

If the mistake is verified, a corrected result shall be published and the prizes redistributed, if necessary.

#### 13.4 Sportsmanship

A competitor and/or his/her coach and/or official team representative may withdraw the competitor's officially posted result based on sportsmanship. The

withdrawal must be approved by the games committee. Competitors originally placed behind a withdrawn competitor will be moved up.

---

# Appendix A

## Scoring Table

---

**Table No. 1**  
**Reference for Scoring (Rule 2.8.1)**

Place	Points		Place	Points
1	40		16	15
2	37		17	14
3	34		18	13
4	31		19	12
5	29		20	11
6	27		21	10
7	25		22	9
8	23		23	8
9	22		24	7
10	21		25	6
11	20		26	5
12	19		27	4
13	18		28	3
14	17		29	2
15	16		30	1



---

# Appendix B

## Sprint Brackets

---

**NCAA REGIONAL HEATS**  
**ADVANCE BY ORDER OF FINISH**  
18 QUALIFIERS

**HEATS**

S1			S2			S3		
1			3			2		
6			4			5		
7			8			9		
12			10			11		
13			14			15		
18			16			17		
To Final A			To Final A			To Final A		
To Final A			To Final A			To Final A		
To Final B			To Final B			To Final B		
To Final B			To Final B			To Final B		
Eliminated			Eliminated			Eliminated		
Eliminated			Eliminated			Eliminated		

**FINALS**

A			B		
1st			7th		
2nd			8th		
3rd			9th		
4th			10th		
5th			11th		
6th			12th		

\* All eliminated skiers will be ranked in the final results in qualifying order, places 13-18, fastest-qualifying eliminated skier in 13th, etc.

\*\*Athletes who do not qualify for the heats shall be listed on the final results in the order in which they finished, 19th on.

NCAA REGIONAL HEATS  
ADVANCE BY ORDER OF FINISH  
24 QUALIFIERS

HEATS

Q1			
1			To S1
8			To S1
9			To S1
16			Eliminated
17			Eliminated
24			Eliminated

Q2			
3			To S1
6			To S1
11			To S1
14			Eliminated
19			Eliminated
22			Eliminated

Q3			
4			To S2
5			To S2
12			To S2
13			Eliminated
20			Eliminated
21			Eliminated

Q4			
2			To S2
7			To S2
10			To S2
15			Eliminated
18			Eliminated
23			Eliminated

SEMIFINALS

S1			
			To Final A
			To Final A
			To Final A
			To Final B
			To Final B
			To Final B

S2			
			To Final A
			To Final A
			To Final A
			To Final B
			To Final B
			To Final B

FINALS

A			
			1st
			2nd
			3rd
			4th
			5th
			6th

B			
			7th
			8th
			9th
			10th
			11th
			12th

\* All eliminated skiers will be ranked in the final results in qualifying order, places 13-24, fastest-qualifying eliminated skier in 13th, etc.

\*\*Athletes who do not qualify for the heats shall be listed on the final results in the order in which they finished, 25th on.



---

# Appendix C

## Concussions

---

A concussion is a brain injury that may be caused by a blow to the head, face, neck or elsewhere on the body with an “impulsive” force transmitted to the head. Concussions can occur without loss of consciousness or other obvious signs. A repeat concussion that occurs before the brain recovers from the previous one (hours, days or weeks) can slow recovery or increase the likelihood of having long-term problems. In rare cases, repeat concussions can result in brain swelling, permanent brain damage, and even death.

Recognize and Refer: To help recognize a concussion, watch for the following two events among your student-athletes during both meets and practices:

1. A forceful blow to the head or body that results in rapid movement of the head.

-AND-

2. Any change in the student-athlete’s behavior, thinking, or physical functioning (see signs and symptoms).

### SIGNS AND SYMPTOMS

#### Signs Observed by Coaching Staff

- Appears dazed or stunned.
- Is unsure of score or opponent.
- Moves clumsily.
- Answers questions slowly.
- Loses consciousness (even briefly).
- Shows behavior or personality changes.
- Can’t recall events before hit or fall.
- Can’t recall events after hit or fall.

#### Symptoms Reported by Student-Athlete

- Headache or “pressure” in head.
- Nausea or vomiting.
- Balance problems or dizziness.
- Double or blurry vision.
- Sensitivity to light.
- Sensitivity to noise.
- Feeling sluggish, hazy, foggy or groggy.
- Concentration or memory problems.
- Confusion.
- Does not “feel right.”

An athlete who exhibits signs, symptoms, or behaviors consistent with a concussion, either at rest or during exertion, should be **removed immediately from practice or competition** and should not return to play until cleared by an appropriate health care professional.

### IF A CONCUSSION IS SUSPECTED:

1. **Remove the student-athlete from play.** Look for the signs and symptoms of concussion if your student-athlete has experienced a blow to the head. Do not allow the student-athlete to just “shake it off.” Each individual athlete will respond to concussions differently.

2. **Ensure that the student-athlete is evaluated right away by an appropriate health care professional.** Do not try to judge the severity of the injury yourself. Immediately refer the student-athlete to the appropriate athletics medical staff, such as a certified athletic trainer, team physician or health care professional experienced in concussion evaluation and management.
3. **Allow the student-athlete to return to play only with permission from a health care professional with experience in evaluating for concussion.** Allow athletics medical staff to rely on their clinical skills and protocols in evaluating the athlete to establish the appropriate time to return to play. A return-to-action progression should occur in an individualized, step-wise fashion with gradual increments in physical exertion and risk of contact. Follow your institution's physician supervised concussion management protocol.
4. **Develop a game plan.** Student-athletes should not return to play until cleared by the appropriate athletics medical staff. In fact, as concussion management continues to evolve with new science, the care is becoming more conservative and return-to-play time frames are getting longer. Coaches should have a game plan that accounts for student-athletes to be out for at least the remainder of the day.

For further details, please refer to the "NCAA Sports Medicine Handbook Guideline on Concussions" or online at [www.ncaa.org](http://www.ncaa.org) and [www.CDC.gov/Concussion](http://www.CDC.gov/Concussion).

---

# Appendix D

## Accommodations for Student-Athletes with Disabilities

---

The NCAA encourages participation by student-athletes with disabilities (physical or mental) in intercollegiate athletics and physical activities to the full extent of their interests and abilities. An NCAA member institution will have the right to seek, on behalf of any student-athlete with a disability participating on the member's team, a reasonable modification or accommodation of a playing rule, provided that the modification or accommodation would not:

1. Compromise the safety of, or increase the risk of injury to, any other student-athlete;
2. Change an essential element that would fundamentally alter the nature of the game; or
3. Provide the student-athlete an unfair advantage over the other competitors.

To request any such modification or accommodation, the member's director of athletics, or his/her designee, must submit a rule waiver request, in writing, to the secretary-rules editor. Such written request should describe:

- a. The playing rule from which relief is sought;
- b. The nature of the proposed modification or accommodation;
- c. The nature of the student-athlete's disability and basis for modification or accommodation; and
- d. The proposed duration of the requested modification or accommodation.

Additionally, each request should be accompanied by documentation evidencing the student-athlete's disability (e.g., a medical professional's letter). Upon receipt of a complete waiver request, the secretary-rules editor will consult with NCAA staff, the applicable sport/rules committee, other sport governing bodies, and/or outside experts, to conduct an individual inquiry as to whether the requested modification or accommodation can be made. In making this assessment, the NCAA may request additional information from the member institution. The secretary-rules editor will

communicate the decision in writing (which may be via email) to the requesting member institution. If the request is granted, the member institution should be prepared to provide the written decision to the officiating staff, opposing coach(es), and tournament director (if applicable) for each competition in which the student-athlete will participate. NCAA members are directed to consult Guideline 2P of the NCAA Sports Medicine Handbook for further considerations regarding participation by student-athletes with impairment.

---

# Appendix E

## Guidelines for Game Officials and Game Management to Use Regarding Lightning

---

The purpose of this appendix is to provide information to those responsible for making decisions about suspending and restarting games based on the presence of lightning.

1. National Severe Storms Laboratory (NSSL) staff strongly recommend that all individuals should have left the game site and reached a safe structure or location by the time the person monitoring the weather obtains a flash-to-bang (lightning-to-thunder) count of 30 seconds (equivalent to lightning being six miles away). This recommendation was developed as a practical way to make a judgment in situations in which other resources such as technology and instrumentation are not available.

In addition, a smaller, but still real, risk exists with the presence of lightning at greater distances. Unfortunately, current science cannot predict where within the radius the next strike will occur.

2. The existence of blue sky and the absence of rain are not protection from lightning. Lightning can, and does, strike as far as 10 miles away from the rain shaft. It does not have to be raining for lightning to strike.
3. When considering resumption of a game, NSSL staff recommends that everyone ideally should wait at least 30 minutes after the last flash of lightning or sound of thunder before returning to the field of activity.
4. If available, electronic detection devices should be used as additional tools to determine the severity of the weather. However, such devices should not be used as the sole source when considering terminating play.

*(Information taken from the NCAA Sports Medicine Handbook and NCAA Championships Severe Weather Policy.)*



# Index to Rules

Term	Page
<b>A</b>	
Announcer	
Alpine.....	<a href="#">14</a>
Cross country.....	<a href="#">37</a>
Antivibration plates.....	<a href="#">21</a>
Appeals	
Against race official.....	<a href="#">23</a>
Alpine decision.....	<a href="#">23</a>
Clerical errors.....	<a href="#">23</a>
Armor	
hard.....	<a href="#">19</a>
soft.....	<a href="#">19</a>
Assistant technical delegate.....	<a href="#">32</a>
<b>B</b>	
Boots.....	<a href="#">21</a>
<b>C</b>	
Calculation, chief of	
Alpine.....	<a href="#">14</a>
Cross.....	<a href="#">37</a>
Chief of Race	
Alpine.....	<a href="#">14</a>
Cross.....	<a href="#">32</a>
Coaches' representatives	
Alpine.....	<a href="#">15</a>
Cross country.....	<a href="#">37</a>
Competitors—Alpine	
Conduct.....	<a href="#">18</a>
Entries.....	<a href="#">18</a>
Invitation.....	<a href="#">18</a>
Number.....	<a href="#">18</a>
Uniforms.....	<a href="#">19</a>
Competitors—Cross country	
Conduct.....	<a href="#">40</a>
Entries.....	<a href="#">41</a>
Number.....	<a href="#">40</a>
Uniforms.....	<a href="#">41</a>
Concussions (App. A).....	<a href="#">57</a>
Controller, chief.....	<a href="#">34</a>
Controllers.....	<a href="#">34</a>
Course, chief of	
Alpine.....	<a href="#">14</a>
Cross country.....	<a href="#">33</a>
Course setter	
Alpine.....	<a href="#">14</a>
Cross country.....	<a href="#">33</a>
Cross Country	
Competition.....	<a href="#">48</a>
Disqualification.....	<a href="#">49</a>
During competition.....	<a href="#">48</a>
Equipment.....	<a href="#">48</a>
Forerunners.....	<a href="#">48</a>
Training.....	<a href="#">48</a>
Cross country relay	
Relay exchange.....	<a href="#">50</a>
Team.....	<a href="#">50</a>
Total relay time.....	<a href="#">50</a>
Cross country sprint	
Course.....	<a href="#">25</a>

Term	Page
Cross Country—Technical Regulations,	
Arrangements.....	<a href="#">25</a>
Current information.....	<a href="#">27</a>
Discontinuance—Cross country.....	<a href="#">11</a>
Disqualification—Cross country.....	<a href="#">49</a>
During competition.....	<a href="#">48</a>
Equipment.....	<a href="#">48</a>
General preparation.....	<a href="#">26</a>
Guidelines.....	<a href="#">25</a>
Marking.....	<a href="#">25</a>
Mass-start area.....	<a href="#">28</a>
Measuring.....	<a href="#">25</a>
Preparation.....	<a href="#">26</a>
Relay-exchange zone.....	<a href="#">29</a>
Specifications.....	<a href="#">25</a>
Start/finish area.....	<a href="#">27</a>
<b>D</b>	
Delayed start.....	<a href="#">20</a>
Determination of finish	
Alpine.....	<a href="#">20</a>
Cross country.....	<a href="#">45</a>
Disqualification	
Alpine.....	<a href="#">21</a>
Cross country.....	<a href="#">50</a>
Draw/seeding	
Cross country.....	<a href="#">42</a>
<b>E</b>	
Equipment—Alpine.....	<a href="#">21</a>
Equipment, chief of.....	<a href="#">9</a>
Events.....	<a href="#">10</a>
<b>F</b>	
Finish checker.....	<a href="#">36</a>
Finish referee	
Alpine.....	<a href="#">14</a>
Cross country.....	<a href="#">35</a>
<b>G</b>	
Games Committee.....	<a href="#">7</a>
Gatekeeper.....	<a href="#">14</a>
Gatekeeper, chief.....	<a href="#">14</a>
Giant slalom, competition	
.....	<a href="#">21</a>
After disqualification.....	<a href="#">21, 22</a>
Disqualification.....	<a href="#">21</a>
Forerunners.....	<a href="#">21</a>
General description.....	<a href="#">21</a>
Helmets, Giant Slalom.....	<a href="#">21</a>
Rerun.....	<a href="#">22</a>
Second-run starting order.....	<a href="#">21</a>
Giant slalom, preparation	
.....	<a href="#">13</a>
Chemicals.....	<a href="#">13</a>
Course marking.....	<a href="#">13</a>
Finish area.....	<a href="#">13</a>
Finish line.....	<a href="#">13</a>
Gates, number of.....	<a href="#">13</a>
Start area.....	<a href="#">13</a>
Vertical drop.....	<a href="#">13</a>
<b>I</b>	
Individual sprint competition Scoring.....	<a href="#">12</a>

Term	Page	Term	Page
<b>J</b>		Slalom, preparation .....	<a href="#">13</a>
Jury .....		Course .....	<a href="#">13</a>
Alpine .....	<a href="#">15</a>	Gates .....	<a href="#">13</a>
Cross country .....	<a href="#">37</a>	Hard snow .....	<a href="#">13</a>
<b>K</b>		Start, finish .....	<a href="#">13</a>
Knowledge of rules .....		Vertical drop .....	<a href="#">13</a>
Alpine .....	<a href="#">19</a>	Sports information, chief of .....	<a href="#">8</a>
Cross country .....	<a href="#">41</a>	Sprint competition scoring .....	<a href="#">12</a>
<b>M</b>		Sprint relay scoring .....	<a href="#">12</a>
Medical services, chief of .....	<a href="#">9</a>	Starter .....	
Meet director .....	<a href="#">7</a>	Alpine .....	<a href="#">14</a>
Mixed relay .....		Cross country .....	<a href="#">35</a>
Cross country .....	<a href="#">42</a>	Starter, assistant .....	
<b>N</b>		Alpine .....	<a href="#">14</a>
Numbers, race—Alpine .....	<a href="#">20</a>	Cross country .....	<a href="#">35</a>
<b>O</b>		Start/finish, chief of—Cross country .....	<a href="#">35</a>
Order of events .....		Start referee .....	<a href="#">14</a>
Alpine .....	<a href="#">20</a>	Substitution .....	<a href="#">18</a>
Cross country (competition program) .....	<a href="#">42</a>	Super gatekeeper .....	<a href="#">15</a>
Organizing committee .....	<a href="#">7</a>	Support services, chief of .....	<a href="#">8</a>
<b>P</b>		Support services committee .....	<a href="#">8</a>
Procedure for start .....		<b>T</b>	
Alpine .....	<a href="#">20</a>	Team sprint .....	<a href="#">29</a>
Alpine Cross country (start commands) .....	<a href="#">45</a>	Technical delegate .....	
Protests .....		Alpine .....	<a href="#">14</a>
Alpine .....	<a href="#">23</a>	Cross country .....	<a href="#">31</a>
Cross country .....	<a href="#">51</a>	Ties .....	
Protocol, chief of .....	<a href="#">9</a>	Alpine .....	<a href="#">20</a>
<b>R</b>		Cross country .....	<a href="#">47</a>
Race, chiefs of .....	<a href="#">8</a>	Timers, assistant .....	
Race committees .....		Alpine .....	<a href="#">14</a>
Alpine .....	<a href="#">14</a>	Cross country .....	<a href="#">36</a>
Cross country .....	<a href="#">31</a>	Timing—Alpine .....	<a href="#">22</a>
Race numbers .....		Timing—Cross country .....	<a href="#">46</a>
Alpine .....	<a href="#">20</a>	Failure of electronic timing .....	<a href="#">46</a>
Cross country .....	<a href="#">44</a>	Primary timing .....	<a href="#">46</a>
Race secretary .....	<a href="#">7</a>	Recording time .....	<a href="#">47</a>
Racing order .....		Secondary timing .....	<a href="#">46</a>
Alpine .....	<a href="#">20</a>	Watch discrepancies .....	<a href="#">46</a>
Cross country .....	<a href="#">42</a>	Tobacco use .....	
Recorder .....		Meet personnel .....	<a href="#">8</a>
Alpine .....	<a href="#">14</a>	Team personnel .....	
Cross country .....	<a href="#">36</a>	Alpine .....	<a href="#">19</a>
Referee—Alpine .....	<a href="#">14</a>	Cross country .....	<a href="#">41</a>
Relay-bib color code .....	<a href="#">44</a>	<b>U</b>	
<b>S</b>		Uniform rule, enforcement .....	<a href="#">21</a>
Scoreboard posters .....		Uniforms .....	
Alpine .....	<a href="#">14</a>	Alpine .....	<a href="#">19</a>
Cross country .....	<a href="#">37</a>		
Scoring .....	<a href="#">10</a>		
Discontinuance .....			
Alpine .....	<a href="#">10</a>		
Cross country .....	<a href="#">11</a>		
Mixed-relay .....	<a href="#">12</a>		
Sprint competition .....	<a href="#">12</a>		
Sprint relay .....	<a href="#">12</a>		
Slalom, competition .....			
Disqualification .....	<a href="#">22</a>		
Forerunners .....	<a href="#">22</a>		

---

# Put your NCAA Rules Books on your Mobile Devices

The NCAA is pleased to announce that “tablet” versions of upcoming NCAA Rules Books will now be available for download from **[www.NCAAPublications.com](http://www.NCAAPublications.com)**.

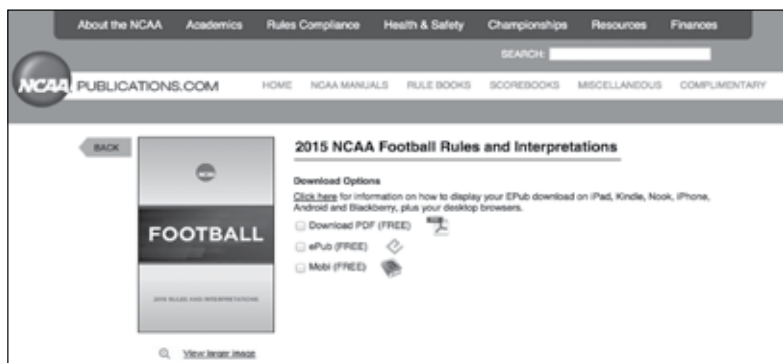
The flexible-layout format allows readers to choose the best reading experience for ANY device or environment. This electronic version will also feature a fully hyperlinked index.

## Enhanced PDF Download

The latest PDF NCAA Rules Books editions also contain interactive features, such as a hyperlinked index and table of contents. Major rules changes and points of emphasis, where applicable, are also hyperlinked. Of course, you can also use the PDF search capabilities to locate all instances of a particular word or term.

## Inclusive Distribution and Display of ePubs

Download your NCAA Rules Books Reader Guide (PDF instructions on [ncaapublications.com](http://ncaapublications.com) with each rules book) for the latest tips on displaying the (ePub) download on your iPhone, iPad, Kindle, Nook, BlackBerry, desktop and browser. The guide also has tips for best experiences on the interactive PDF. All ePub downloads meet the guidelines of the NCAA Inclusion Forum regarding equal accessibility.



At **[www.NCAAPublications.com](http://www.NCAAPublications.com)**, touch the Rules Books tab and make your selection from the available links. Click the appropriate checkbox to begin download of the latest electronic version of your rules book. Each mobile device will require installation of the appropriate application for reading your ebook on a tablet or phone. Consult your device or app manufacturer for which mobile version (.mobi) or (.epub) format is compatible with your required application.

*EACH YEAR, MORE THAN*  
**480,000**  
*NCAA STUDENT-ATHLETES*

*GAIN SKILLS TO*  
**SUCCEED**  
*ON THE FIELD, IN THE CLASSROOM*

*AND IN*  
**LIFE.**

